



# Mount Kenya University

Unlocking Infinite Possibilities



## PROSPECTUS 2026/2027 EDITION

### INTAKES

Regular Learning, Part-time, Open, Distance and Electronic Learning (ODEL)  
(JANUARY, MAY & SEPTEMBER).

Distance, Institution-Based and e-Learning (DIBEL)  
(APRIL, AUGUST & DECEMBER)

### MISSION

*To provide world-class education, research and innovation for global transformation and sustainable development.*

### VISION

*To be a global hub of excellence in education, research, and innovation.*

### CORE VALUES

*The University's Core Values that form the basis of engagement, teaching and learning are: Innovation, integrity, equity, academic freedom and competitiveness.*

### PHILOSOPHY

*To harness knowledge in applied Sciences and Technology for the service of humanity.*

## WHICH SUSTAINABLE DEVELOPMENT GOALS ARE YOU COMMITTING TO? AND LET'S TAKE ACTION TOGETHER



MKU is the United Nations Academic Impact  
(UNAI SDG 9 Hub-Chair - 2025-2027)

<https://www.un.org/en/academic-impact/unai-sdg-hub-9>

# Contents

<b>UNDERGRADUATE COURSES</b>	<b>10</b>
<b>COLLEGE OF HEALTH SCIENCES</b>	<b>12</b>
<b>MEDICAL SCHOOL</b>	<b>13</b>
<b>SCHOOL OF CLINICAL MEDICINE</b>	<b>16</b>
<b>SCHOOL OF PUBLIC HEALTH</b>	<b>17</b>
<b>SCHOOL OF PHARMACY</b>	<b>19</b>
<b>SCHOOL OF NURSING</b>	<b>20</b>
<b>SCHOOL OF LAW</b>	<b>21</b>
<b>SCHOOL OF EDUCATION</b>	<b>23</b>
<b>SUBJECT COMBINATIONS IN EDUCATION COURSES</b>	<b>25</b>
<b>SCHOOL OF PURE AND APPLIED SCIENCES</b>	<b>26</b>
<b>SCHOOL OF COMPUTING &amp; INFORMATICS</b>	<b>31</b>
<b>SCHOOL OF ENGINEERING ENERGY &amp; THE BUILT ENVIRONMENT</b>	<b>34</b>
<b>SCHOOL OF SOCIAL SCIENCES</b>	<b>36</b>
<b>INSTITUTE OF SECURITY STUDIES, JUSTICE AND ETHICS</b>	<b>38</b>
<b>JOURNALISM &amp; MASS COMMUNICATION</b>	<b>40</b>
<b>SCHOOL OF BUSINESS AND ECONOMICS</b>	<b>43</b>
<b>SCHOOL OF HOSPITALITY, TRAVEL AND TOURISM MANAGEMENT</b>	<b>48</b>
<b>MWAI KIBAKI CONVENTION CENTRE</b>	<b>50</b>
<b>GROW YOUR TALENT WITH US</b>	<b>52</b>





<b>GRADUATE STUDIES</b>	<b>55</b>
<b>THE COLLEGE OF GRADUATE STUDIES &amp; RESEARCH</b>	<b>56</b>
<b>MEDICAL SCHOOL</b>	<b>58</b>
<b>SCHOOL OF CLINICAL MEDICINE</b>	<b>58</b>
<b>SCHOOL OF PUBLIC HEALTH</b>	<b>58</b>
<b>SCHOOL OF NURSING</b>	<b>60</b>
<b>SCHOOL OF LAW</b>	<b>60</b>
<b>SCHOOL OF ENGINEERING, ENERGY &amp; BUILT ENVIRONMENT</b>	<b>60</b>
<b>SCHOOL OF EDUCATION</b>	<b>61</b>
<b>SCHOOL OF BUSINESS AND ECONOMICS</b>	<b>63</b>
<b>SCHOOL OF PURE AND APPLIED SCIENCES</b>	<b>65</b>
<b>SCHOOL OF COMPUTING AND INFORMATICS</b>	<b>67</b>
<b>SCHOOL OF SOCIAL SCIENCES</b>	<b>67</b>
<b>INSTITUTE OF SECURITY STUDIES, JUSTICE AND ETHICS</b>	<b>70</b>
<b>SCHOOL OF HOSPITALITY, TRAVEL AND TOURISM MANAGEMENT</b>	<b>71</b>
<b>APPLICATION PROCEDURE</b>	<b>72</b>
Tuition Fee	72
Mode of Payment	72
Financial Aid	72
<b>EQUIP AFRICA INSTITUTE</b>	<b>74</b>

# Why study at Mount Kenya University

Mount Kenya University (MKU) is a premier chartered university committed to a broad-based, holistic and inclusive system of education. It has an overall goal of promoting human capital development for society's progressive good. The University has adopted several international best practices in its core functions, which have enabled its students and faculty win awards, thus stamping its authority as a Centre of excellence. The university thrives in an environment that fosters innovation, creativity, competitiveness, scientific research and critical thinking to drive transformation.

The University has its main campus in Thika town, in the outskirts of Kenya's capital Nairobi, where it is transforming a hitherto industrial town into an educational hub. Through a well-structured network of campuses, the University is broadening access to quality higher education for the larger East African Community and to the rest of Africa. The University offers a wide-range of academic and professional courses, through various flexible modes of delivery including Digital learning. The University is a member of Inter-University Council of East Africa (IUCEA), Association of Common Wealth Universities, and National Association of Private Universities of Kenya, Kenya Association of Private Universities, Association of African Universities, and Association of African Business Schools, United Nation Academic Impact and The Talloires Network.

The University has premier, international accredited academic and professional programmes backed by renowned international and local faculty members, researchers and talented students. This underpins the continued funding and investment in research for faculty and students, information resource centre, incubation and innovation centres, internationally benchmarked moot court, Enterprise and Mentorship

Academy and integration of ICT in learning.

The University boasts of ultra-modern learning infrastructure that matches global standards as evidenced by the well-equipped award-winning multi-media library and the magnificent Chancellor's Tower, Alumni plaza, MKU Union Tower making the university unique and prestigious. Its unique brand epitomized by the distinct blue and light yellow corporate colours is a byword for academic excellence to many students and potential employers looking for an increasingly competitive, well-trained manpower.

An empowered Divisional Unit of student welfare services continuously re-engineers and positions itself to unlock emerging talents among the students through diversified extra curricula activities, career orientations and international linkages/partnerships for students to achieve their full potential. The international students office supports foreign students settle in and enjoy a pleasant experience at Mount Kenya University.

## Reasons Mount Kenya University is a Preferred University

1. *Accreditation:* Accredited by the Commission for University Education, Kenya.
2. *International recognition:* The University is fully chartered and committed on compliance with international standards on quality.
3. *Convenient fees payment mode:* Affordable and flexible fees payment in easy percentage instalments of 40:20:20:20.
4. *Accessible campuses:* Students have a choice to study from any of its accredited campuses in Kenya and other countries, hence increased access to and equity in university education plus Digital varsity.

5. *Digital window:* Wi-Fi internet access across all the campuses.
6. *Superb staff:* Qualified and committed teaching and non-teaching staff.
7. *Academic resources:* Well-equipped Science and IT laboratories, Library, Postgraduate Centre and other academic resources.
8. *Flexible study options:* Flexible modes of learning, which include full-time, digital learning, Institution-based learning, part-time (evening and weekends).
9. *Course completion time:* Students are able to complete their course within the stipulated time. Students' academic progress is monitored and evaluated on a continuous basis.
10. *Student welfare support:* For the convenience of the students, the University has in place accommodation facilities and a student centre that houses a restaurant serving international cuisine. The university also has a gym and a salon/barber shop. There are also shops for the basic needs of students, laundry and dry cleaning services. The integrated sick bay offers basic health services and ensures a healthy environment for the University community. The sporting and recreation activities at the university vary and include rugby, football, tennis, volley ball, athletics, swimming and others such as drama.
11. *Academic/Social trips:* The University has in place a fleet of buses. Transport is always available for academic and social trips.
12. *Academic exchanges:* Students' benefit from academic exchanges with foreign and local institutions of higher learning.
13. *Career placement:* The University produces highly skilled graduates who are employable. Others go into self-employment and create jobs.
14. *Multicultural diversity:* The University recognises the diversity of its student population and develops talents through organising of cultural events. There is unity in diversity.
15. *Community Service/Engagements:* Mount Kenya University is committed to carrying out corporate social responsibility based activities that add value to the community we live in.
16. *E-Learning facilities:* Use of ICT and other technologies, such as kindles.
17. *Research and Development:* We create innovators and support them to commercialise innovations and inventions.
18. *Graduate Enterprise Academy:* this is a platform offered free of charge by the University Board of Directors to assist students & Alumni to be job creators rather than job seekers (<http://www.mku.ac.ke/enterprise-academy/>)
19. *Transition rate:* Students progress from one level to another at a very high rate, which is an indicator of satisfaction.
20. *Security:* Enhanced security in the University and within its environs through 24-hour CCTV camera surveillance and night patrols by security agencies.
21. *Synergistic Partnerships:* University partners with research institutions, Universities, hospitals and forges strong industry – academia linkages
22. *International students and staff exchanges:* With Clarke University (USA), Makerere University, Bonn Rhein Sieg University (BRSU) of Applied Sciences (Germany) and Vincent Pol University (Poland) taking a lead, MKU, encourages students and staff from universities abroad and vice - versa to engage in collaborative exchange programmes.
23. *Automation of postgraduate processes:* This improves efficiency and reduces time wasted due to bureaucratic procedures.



## A home away from home

At MKU, most new undergraduate students are provided with accommodation where they do a lot of their studying and socializing. You will meet a whole cross-section of people from around the country and the East African region with their own unique interests and passions.

We also provide many opportunities to engage socially – in activities such as sports, performing arts and voluntary work. There are numerous sports, clubs and societies for students to choose from. MKU has a proud record of achievements in national and international co-curricular university competitions such as drama, ball games, athletics and indoor games.



STUDENTS  
WORK IN  
TEAMS TO  
DEVELOP  
SKILLS AND  
THE ATTITUDE  
NEEDED FOR  
INTELLECTUAL  
ENGAGEMENT.

# A word of welcome

Mount Kenya University programmes offer you the chance to engage with academics at the forefront of cutting-edge research and to contribute to addressing our global challenges.

Thank you for taking the time to explore and find out more about Mount Kenya University (MKU), one of the leading chartered universities in Kenya. At this point in your secondary school education, we are delighted to introduce to you our industry-focused courses that will enable you to realise your dream career.

We provide an exciting range of opportunities and experiences. Our students leave with a greater sense of purpose and global outlook, and the skills and confidence to make positive change – to their own lives and to the lives of those around them.

From its beginning as a middle level tertiary college in the early 1990s, MKU has grown to become one of the biggest universities in Kenya and the East African region, offering broad-based market-oriented programmes from certificate, diploma, undergraduate, master to doctorate levels.

If you are looking to study at a leading university with a wide choice of high quality industry-driven programmes, then seek no further than MKU.



We offer courses in Medicine, Health Sciences, Pure and Applied Sciences, Engineering, Law, Education, Computing and Informatics, Business, Economics, Hospitality, Travel and Tourism Management, and Social Sciences. Because of its market-driven programmes, MKU students are greatly sought after by employers, making the University have one of the highest graduate employment rates in Kenya as demonstrated on page 81.

The University has its main campus in Thika town, with a well-structured network of campuses offering quality education to Kenyans, the larger East African Community and has a footprint in many nations through digital learning.

**PROF JOHN J. STRUTHERS**  
MA (Hon), MPhil, FRSA, FHEAS  
Chancellor

# Word from the Vice-Chancellor

Our faculty and students pursue innovative scholarship in health, pure and applied sciences and social sciences where individuals of all backgrounds create a learning community that values a multi-faceted approach to education.

Being one of the leading universities in Kenya and the East African region, MKU will equip you with a contextually-grounded, world-class education. We train our graduates to become accomplished innovators, job creators and thought leaders.

You will be taught and mentored in an academically challenging and intellectually stimulating environment

We have invested in ultra-modern learning facilities that match global standards, which include state-of-the-art science and anatomy laboratories; ICT centres; lecture theatres and tutorial rooms; demonstration rooms and studios – the tools you need to explore and excel.

Wherever you walk around campuses, you'll come across purposely built spaces, such as the Study Villas, to meet with colleagues, take time out, or get ahead on your assignments. Additionally, we are very much alive to the fact that a healthy body begets a healthy mind. Thus, we also offer our students a wide range of cultural and sporting activities through our



many student clubs and societies. Whether you are looking to get into shape and have fun too, or you are gearing towards professional sports, there are plenty of ways to make the best of our sporting facilities.

The Undergraduate Prospectus is intended to empower secondary school students with functional information on post-secondary training in certificate, diploma, undergraduate, master and doctorate levels at one of Kenya's leading universities.

**PROF DEOGRATIUS JAGANYI**

PhD, MSc, DIC, MRSC

Vice-Chancellor

# MKU BY



MKU MEDICAL  
SCHOOL RANKED  
**BEST**  
IN EAST AFRICA



**TOP 5**  
DESTINATION FOR  
INTERNATIONAL STUDENTS  
FROM AFRICA AND BEYOND

*Source: CPS Research International*

**15** NUMBER OF  
CAMPUSES  
AND CENTRES

**05** NUMBER OF  
COUNTRY  
OFFICES



**173,000+**  
ALUMNI POPULATION

*Source: MKU Alumni Directorate*



**TOP 10**  
RESEARCH FUNDING  
RANKING

*Source: CUE/CPS*



**TOP 10**  
GRADUATE  
EMPLOYABILITY  
RANKING

*Source: State of Graduate Employability in Kenya by the CPS Research International*



**GLOBAL HUB**  
OF EXCELLENCE

UNAI SDG 9: INDUSTRY, INNOVATION  
AND INFRASTRUCTURE

# THE NUMBERS



**TOP 3**  
KENYAN UNIVERSITY  
LISTING

Source: Times Higher Education 2024



**TOP 5**  
RANKING AMONG  
UNIVERSITIES  
IN SPORTS



**60,000+**

STUDENT POPULATION  
IN ALL MKU CAMPUSES

Source: MKU Admissions Office

**03** NUMBER OF  
COLLEGES

**40** NUMBER OF  
SCIENCE LABS



**43**  
COUNTRIES  
REPRESENTED IN THE  
STUDENT POPULATION

Source: CPS Research International



**164**  
PROGRAMMES  
APPROVED BY  
COMMISSION  
FOR UNIVERSITY  
EDUCATION IN  
KENYA

Source: CUE



**28**  
NUMBER OF  
GRADUATIONS HELD

# UNDERGRADUATE COURSES





## COLLEGE OF HEALTH SCIENCES

### Experts rank MKU among best Medical Schools in East Africa

MKU's programmes across the various disciplines have been ranked among the best in Kenya and the East African region. Specifically, the University Medical School has firmly established itself as a leader in the training of medical personnel. The Annual Inspection of East African Medical and Dental Schools, which is conducted by health technical experts from the Medical and Dental Practitioners Boards / Councils from the East African Community (EAC) partner states, has ranked MKU at the top.

The inspection focuses on quality of academic programmes, human resource, student affairs, infrastructure, monitoring and evaluation of programmes, research and innovation and general compliance with set guidelines.



# NO. 1

RANKED TOP  
AMONG MEDICAL  
SCHOOLS IN  
EAST AFRICA

*Source: EAC Partner States Medical Practitioners Board and Councils*



## COLLEGE OF HEALTH SCIENCES

The University's College of Health Sciences offers innovative programmes for health workers, which incorporate new discoveries, evolving knowledge and technologies required to be a 21st century health worker in an integrated healthcare system. The MKU College of Health Sciences offers programmes in medicine and surgery, medical laboratory sciences, clinical medicine, public health, pharmacy and nursing.



OUR GOAL IS TO PREPARE STUDENTS TO BE THE NEXT GENERATION OF MEDICAL AND HEALTH PROFESSIONALS THROUGH HANDS-ON TRAINING.

## MEDICAL SCHOOL – *medicine@mku.ac.ke*

The Medical School offers the Bachelor of Medicine and Bachelor of Surgery degree programme. The course is accredited by the Medical Practitioners and Dentists Council and the East African Community National Medical and Dental Practitioners Boards and Councils.

The training programmes are supported by state-of-the-art science laboratories and a modern anatomy laboratory at the Thika Level 5 Hospital. MKU also experience.

Programmes	Admission Requirements	Duration & Fees
<b>Bachelor of Medicine and Bachelor of Surgery</b>	<p>KCSE mean grade of C+ or its equivalent, and B in Biology, Chemistry, Physics or Mathematics, and English or Kiswahili</p> <p>For advanced certificate (A-level) holders, a minimum of two principal passes in Biology, Chemistry and a subsidiary pass in either Mathematics or Physics.</p> <p>For diploma holders in Medical Sciences, a minimum 'O' level Division II pass in K.A.C.E or KCSE C+ (plus) mean grade and a credit C+ in cluster subjects, in addition to a three year diploma with a minimum of a credit pass from a medical training institution recognized by the Board.</p> <p>For holders of any degree in Biological Sciences or equivalent qualifications from a recognized university subject to passing Graduate Record Examination (GRE).</p>	<p><b>18 trimesters (6 years)</b> KSh. 216,500 per trimester</p>

## Career opportunities

You will be trained for careers as:

- Medical doctors
- Specialists in various medical fields after further education e.g. paediatrics, neurosurgery etc.
- Clinical researchers
- Academicians



MKU medical degrees recognised by African consortium of medical schools, UK, USA and Canada

Programmes	Admission Requirements	Duration & Fees
<b>Bachelor of Science in Medical Biochemistry</b>	KCSE certificate with a minimum mean grade of C+ and grade C+ (Plus) in Biology Biological Sciences, C+ (Plus) in Chemistry or Physical Sciences, C (Plain) in English or Kiswahili <b>Or</b> KACE certificate with a minimum of two principal passes in Science subjects and O level with credit in Biology/Chemistry <b>Or</b> Diploma with at least Credit in a relevant discipline from an institution of higher learning recognized by Mount Kenya University Senate	<b>8 Semesters</b> KSh 85,000 per semester May and September Intakes Full-time (Regular)

## Career opportunities in Medical Biochemistry

- Work in a national research institution
- Clinical study coordinator in the pharmaceutical and food manufacturing industry
- Laboratory analyst at the Kenya Bureau of Standards and Government Chemists.
- Teaching biochemistry
- Work in a hospital as a biochemist
- Work as medical writers and Medical Representatives in the pharmaceutical industries

## DEPARTMENT OF MEDICAL LABORATORY

The department offers diploma, bachelor's, master's and doctorate programmes in Medical Laboratory Sciences, which deal with diagnostics and medical research. You will learn about important aspects and functioning of the human body such as immunology; haematology and blood transfusion; microbiology; urology; molecular biology; histology and cytology; parasitology and entomology; and clinical chemistry. The medical laboratory programmes are approved by the Kenya Medical Laboratory Technicians and Technologists' Board (KMLTTB), which also registers practitioners in the field.

Programmes	Admission Requirements	Duration & Fees
<b>Bachelor of Science in Medical Laboratory Sciences</b> Approved by KMLTTB	KCSE mean grade of C+ or its equivalent, and C+ in Mathematics or Physics, Biology, Chemistry, and English or Kiswahili <b>Or upgrading:</b> One must be registered by the KMLTTB board as Diploma holder and must have Practiced for at least two years after being registered as a Diploma holder	<b>8 semesters for direct entry</b> KSh. 70,000 per semester <b>6 semesters for Diploma holders (upgrading)</b> KSh. 72,200 per semester

## Career opportunities

Students graduating with Diploma, Bachelor, Master and PhD degrees in medical laboratory sciences work as:

- Medical laboratory technologists
- Medical laboratory sales representatives
- Researchers
- Research assistants
- Teachers and lecturers

## DEPARTMENT OF DENTAL SCIENCES

The Department of Dental Sciences offers bachelors and diploma programmes in Dental Technology, and Oral Health. The programmes have been approved by the Kenya Dental Technologists Association and the Oral Health Association of Kenya.

Programmes	Admission Requirements	Duration & Fees
<b>Bachelor of Science in Dental Technology</b> (Registered with the Kenya Dental Technologists Association)	<b>DIRECT ENTRY</b> KCSE mean grade of C+ or its equivalent, and C+ in Mathematics or Physics or Physical Sciences, Chemistry or Biology and English or Kiswahili <b>Or upgrading:</b> Diploma in Dental Technology from an Institution recognized by Mount Kenya University Senate. * Have undergone 1 year mandatory internship and at least 1 year working experience.	<b>KSh. 90,000</b> per semesters <b>8 semesters</b> for <b>Direct Entry</b> <b>5 semesters</b> for <b>Diploma Holders</b>
<b>Bachelor of Science in Oral Health</b> (Registered with the Oral Health Association of Kenya)	<b>DIRECT ENTRY</b> KCSE mean grade of C+ or its equivalent, and C+ in Mathematics or Physics or Physical Sciences; Chemistry, Biology; and English or Kiswahili <b>Or upgrading</b> Diploma in community Oral Health from an institution recognized by Mount Kenya University Senate. * Have undergone 1-year mandatory internship and at least 1 year working experience	<b>KSh. 90,000</b> per semesters <b>8 semesters</b> for <b>Direct Entry</b> <b>5 semesters</b> for <b>Diploma Holders</b>
<b>Diploma in Community Oral Health</b> (Dental Therapy)	KCSE mean grade of C or its equivalent, and C in English/ Kiswahili, Biology or Biological Sciences and C- in any two of the following subjects: Mathematics, Chemistry, Physics, Physical Sciences, Agriculture and General Science	<b>9 trimesters</b> KSh. 59,550 per trimester
<b>Diploma in Dental Technology</b>	KCSE mean grade of C and C in English or Kiswahili, Chemistry or Biology and C- in either Mathematics, Physics or Physical Sciences.	<b>9 trimesters</b> KSh. 59,550 per trimester

## Career opportunities

Diploma and degree holders in Dental Technology make careers as:

- Dental technologists (replacing teeth, fixing braces, mouth guards, whiten/bleach teeth and cosmetic dentistry).
- Oral health technologists (cleaning, scaling and filling teeth)
- Dental therapists

## SCHOOL OF CLINICAL MEDICINE – *clinical@mku.ac.ke*

The School comprises two departments: Clinical Sciences and Health Records Management. It offers Certificate, Diploma, Bachelor and Master programmes in Health Records and Information Technology, Clinical Medicine and Surgery, Clinical Medicine and Community Health.

### DEPARTMENT OF CLINICAL SCIENCES

Programmes	Admission Requirements	Duration & Fees
<b>Bachelor of Science in Clinical Medicine and Community Health</b>	KCSE mean grade of C+ or equivalent and C+ in Biology or Biological Sciences, English or Kiswahili, Chemistry or Physical Sciences and Mathematics or Physics <b>Or upgrading:</b> Diploma in Clinical medicine and Surgery (Registered By COCK) from an institution recognized by Mount Kenya University Senate.	<b>8 Semesters (Regular)</b> KSh. 118,600 per semester <b>6 semesters (upgrading)</b> KSh. 125,000 per semester
<b>Diploma in Clinical Medicine and Surgery</b>	KCSE mean grade of C (Plain) or its equivalent and C (plain) in English/Kiswahili, C (plain) in Biology, C- (minus) in Chemistry, Mathematics/ physics.	<b>9 Trimesters</b> KSh. 66,000 per trimester (September intake only)

### DEPARTMENT OF HEALTH RECORDS MANAGEMENT

<b>Bachelor of Science in Health Records and Information Management</b>	KCSE mean grade C+ (C plus). C+ in English/Kiswahili C (plain) in Mathematics C- in Biology/Biological sciences C (plain) in any one of the following science subjects: Physics, Chemistry/Physical Sciences <b>Or</b> Diploma in Health Records and Information Technology from a recognized institution.	<b>8 Semesters</b> KSh. 55,000 per semester <b>Upgrading</b> <b>Digital learning - 6 semesters</b> KSh. 60,000 per semester <b>Weekend classes - 6 semesters</b> KSh. 65,000 (September intake)
<b>Diploma in Health Records and Information Technology</b>	KCSE mean Grade of C or its equivalent. C (plain) in English/Kiswahili, C- in Mathematics, D+ in Biology/Biological Sciences, C- in Mathematics and C- in any one of the following: Physics, Chemistry, Computer Science, Agriculture, Home Science, Economics, Geography, Commerce and Business Studies <b>Or</b> A certificate in health records from a recognized training institution	<b>9 Trimesters (Regular)</b> KSh. 34,550 per trimester <b>Upgrading</b> <b>Weekend classes - 6 trimesters</b> for certificate holders KSh. 29,000 per semester (January & September intake)
<b>Certificate in Health Records and Information Technology</b>	KCSE mean Grade of C- (Minus). C- in English/Kiswahili, D (Plain) in Biology/Biological Sciences, D+ (Plus) in Mathematics and D+ in any one of the following: Physics, Physical Science, Chemistry, General Sciences, Computer Studies, Agriculture, Home Science, Economics, Geography, Commerce and Business Studies.	<b>6 Trimesters</b> KSh. 34,550 per trimester (January & September intake)

### Career opportunities

Graduates of Clinical Medicine and Health Records Management are readily absorbed in public and private health care facilities, research institutes and/or agencies, tertiary institutions and non-governmental organisations (NGOs) as:

- Clinical instructors / Officers
- Research assistants/associates
- Health Records Information Managers
- Data registrars/Data entry clerks
- Health programme managers/supervisors
- Health records assistants
- Academicians
- Research assistants
- Tutors/lecturers

## SCHOOL OF PUBLIC HEALTH – [publichealth@mku.ac.ke](mailto:publichealth@mku.ac.ke)

The School offers world-class teaching, learning, research, innovation and investments in public health. It houses programmes in Nutrition and Dietetics, Food Science and Processing Technology, Health Systems Management, Public Health in Reproductive Health, Food Hygiene and Safety, and Environmental Health.

### Nutrition and Dietetics

The department offers Certificate, Diploma, Bachelor and Master programmes in Nutrition and Dietetics and Food Science and Processing Technology.

Programmes	Admission Requirements	Duration & Fees
<b>Bachelor of Science in Nutrition and Dietetics</b> (Accredited by the Kenya Nutritionist and Dietitians' Institute)	KCSE mean grade of C+ with a grade of C (Plain) in Chemistry or Physical Sciences, Biology or Biological Sciences and English or Kiswahili AND grade C (plain) either Physics, Mathematics or Geography.	<b>Direct entry 8 Semesters</b> KSh. 62,500 per semester <b>Diploma entry - 8 Semesters</b> KSh. 59,550 per semester
<b>Diploma in Nutrition and Dietetics</b> (Accredited by the Kenya Nutritionist and Dietitians' Institute)	KCSE mean grade of C- or its equivalent, and D+ in English/Kiswahili, Biology or Biological Sciences, Chemistry or Physical sciences and D (plain) in either one of the following subject; Physics, Mathematics, Home Science, Agriculture	<b>3 academic years</b> KSh. 39,550 per trimester
<b>Bachelor of Science in Food Science and Processing</b>	KCSE mean grade of C+ or its equivalent, and C+ in Chemistry, Biology/Biological Sciences, Mathematics/ Physics/Physical Sciences/ Geography or any other of the group IV subjects in KCSE or its equivalent	<b>8 semesters (Regular)</b> KSh. 62,550 per semester
<b>Diploma in Food Science and Processing Technology</b>	KCSE mean grade of C with C- in Chemistry, Biology, Mathematics or Physics, Biological Sciences or Physical Sciences.	<b>9 Trimesters</b> KSh. 34,550 per trimester
<b>Certificate in Nutrition and Dietetics</b> (Accredited by the Kenya Nutritionist and Dietitians' Institute)	KCSE mean grade of D and D in English/ Kiswahili, Biology or Biological Sciences, Chemistry or Physical Sciences and D (plain) in either one of the following subjects; Physics, Mathematics, Home Science, Agriculture	<b>6 Trimesters</b> KSh. 34,550 per trimester

### Career opportunities

Graduates from Nutrition and Dietetics and Food Science are absorbed in areas such as:

- Nutritionist/dietician
- Clinical nutritionist/dietician
- Public health nutritionist
- Community nutritionist
- Food service diet therapist
- Tutor/lecturer
- Nutrition scientist in research institutions
- Quality assurance in food industries
- Research Institution
- Innovation and New Product Development in the food industry
- NGO's involved in food security,
- Self employment and in Training institutions,
- Technicians in learning institutions

## DEPARTMENT OF COMMUNITY HEALTH, EPIDEMIOLOGY & BIOSTATISTICS

<i>Programmes</i>	<i>Admission Requirements</i>	<i>Duration &amp; Fees</i>
<b>Bachelor of Science in Community Health and Development</b>	KCSE mean grade of C+ or its equivalent, and C in either English or Kiswahili; Mathematics or Physics, Chemistry and Biology	<b>8 semesters</b> KSh. 55,000 per semester
<b>Bachelor of Science in Health Education and Promotion</b>	KCSE mean grade C+ or its equivalent, and C in the following subject cluster either English/Kiswahili; Mathematics or Physics, Chemistry, Biology	<b>8 semesters</b> KSh. 62,550 per semester
<b>Diploma in Community Health and Development</b>	KCSE mean grade C or its equivalent and C- in English or Kiswahili and one of the following: Mathematics or Physics or Biology or Chemistry or Physical Science or Biological Science	<b>7 semesters</b> KSh. 34,550 per trimester
<b>Certificate in Community Health and Development</b>	KCSE mean grade of D+ or its equivalent and D in English or Kiswahili, Mathematics or Physics or Biology or chemistry or physical science or Biological science	<b>6 semesters</b> KSh. 29,550 per trimester

## DEPARTMENT OF ENVIRONMENTAL HEALTH, HEALTH SYSTEMS MANAGEMENT

<i>Programmes</i>	<i>Admission Requirements</i>	<i>Duration &amp; Fees</i>
<b>Bachelor of Science in Health Systems Management</b>	KCSE mean grade of C+ or its equivalent, and C+ in English or Kiswahili, C in Mathematics or Physics, Chemistry, Biology	<b>8 semesters</b> KSh. 57,500 per trimester  Digital Learning KSh. 53,000 per trimester
<b>Bachelor of Science in Public Health</b>	KCSE mean grade of C+ or its equivalent, and C+ in Mathematics or Physics; Chemistry; Biology or Biological Sciences; and Kiswahili or English	<b>8 semesters</b> KSh. 67,500 per trimester

## SCHOOL OF PHARMACY – [pharmacy@mku.ac.ke](mailto:pharmacy@mku.ac.ke)

The MKU School of Pharmacy is accredited by the Pharmacy and Poisons Board (PPB) and the Pharmacy Regulatory Authority in accordance with the Pharmacy and Poisons Act (Cap 244). The School offers Diploma in Pharmaceutical Technology and Bachelor of Pharmacy.

Programmes	Admission Requirements	Duration & Fees
<b>Bachelor of Pharmacy</b>	<b>Direct Entry</b> KCSE mean grade of B- or its equivalent, and C+ in cluster subjects: Biology or Biological science, Chemistry, Mathematics/Physics and English/ Kiswahili	<b>15 Trimesters</b> This includes a compulsory one semester Industrial attachment  KSh 125,000 per Trimester
	<b>Upgrading (Diploma Entry)</b> The applicants must have studied the Diploma in Pharmacy/ Pharmaceutical Technology in a Pharmacy and Poisons Board (PPB) Accredited institution <b>Plus</b> Enrolled as a Pharmaceutical Technologist by the PPB	<b>9 semesters (4 Academic Years)</b> This includes a compulsory one semester Industrial attachment)  KSh. 145,000 per semester (KSh. 290,000 per academic year)
<b>Diploma in Pharmaceutical Technology</b>	KCSE mean grade of C or its equivalent, and C in Biology or Biological Sciences, Chemistry, Mathematics or Physics, and English or Kiswahili	<b>9 Trimesters</b> This includes a compulsory 6 months Industrial attachment  KSh. 49,550 per trimester

## Career opportunities

Careers opportunities for those trained in pharmacy are available in public and private health facilities, research institutions, tertiary institutions and pharmaceutical manufacturing industry and include:

- Pharmaceutical technologists
- Pharmacists
- Researcher coordinators
- Quality Assurance managers
- Production managers
- Marketing and medical representatives
- Regulatory Affairs Managers
- Pharmacy Tutors

## SCHOOL OF NURSING — [nursing@mku.ac.ke](mailto:nursing@mku.ac.ke)

At the School of Nursing, which is accredited by the Nursing Council of Kenya, you will be trained on autonomous and collaborative care of individual patients, families, groups and communities in all settings. We emphasise on integration of new healthcare technology and the need to translate research-based knowledge into real life nursing practice.

The School offers undergraduate and post-graduate programmes in Midwifery, Community Health Nursing, Medical-Surgical Nursing, Nursing Education, Leadership and Management.

Programmes	Admission Requirements	Duration & Fees
<b>Bachelor of Science in Nursing</b> (Direct Entry)	KCSE mean grade of C+ (plus) and C+ (plus) in each of the following subjects: English/ Kiswahili, Mathematics/Physics, and Chemistry & Biology or its equivalent	<b>Regular -12 trimesters</b> KSh. 106,300 per trimester Thika Main Campus Only May and September Intakes Only (Excluding placement fee), Indexing and NCK training materials KSh. 9,550 Payable directly to Nursing Council of Kenya (A/C No. 01136098613400 Co-operative Bank
<b>Bachelor of Science in Nursing</b> (Upgrading, Distance Learning)	KCSE mean grade C (plain) or Division II <b>Plus</b> Either Kenya registered community health nursing (KRCHN), Kenya registered nursing (KRN), Kenya registered nurse/ mid-wife (KRN/M), Kenya registered nursing/ Mental Health and psychiatry (KRN/MHP) OR Kenya Registered Midwifery (KRM) Certificate issued by nursing of Kenya <b>Plus</b> A valid practice license from Nursing Council of Kenya. <b>Plus</b> Two years of work experience after graduating as a registered nurse <b>Plus</b> Nurses/ mid-wife trained outside Kenya and license by the council must seek clearance before progression	<b>8 trimesters</b> May and September Intakes Only KSh. 65,000 per trimester (Excluding placement fee), Indexing and NCK training materials KSh. 26,000 Payable directly to Nursing Council of Kenya (A/C No. 01136098613400 Co-operative Bank

## Career opportunities

With the reforms being undertaken in the health sector to achieve Universal Health Coverage (UHC) at the County and National levels, graduates in Nursing have very promising career prospects as nurses in;

- Health facilities under the 47 counties and the National Government
- Faith-based organisations
- Research institutes
- The United States of America (USA), the United Kingdom (UK) and Canada once licensed by the Nursing Council of Kenya
- Private health facilities such as clinics and nursing homes



## SCHOOL OF LAW

Law affects all of our relationships; with other people, with banks and companies, and with governments. The MKU School of Law was started in 2009 and is housed at the Mount Kenya University Parklands Campus within the Capital City of Nairobi. It is fully accredited by the Commission for Higher Education and Council of Legal Education.

The Law Campus has state-of-the-art library, reading areas, ICT facilities, moot court, and online research journals, among other academic resources. From company law and cyber-crime, to music and medicine, our law programmes at certificate, diploma and degree levels prepare you to put theoretical knowledge into practice whether in Kenya or internationally.



THE BEST LAWYERS,  
THE BEST TEACHERS,  
THE BEST PUBLIC  
SERVANTS, THE BEST  
ENTREPRENEURS ARE  
THOSE WHO TAKE  
OPPOSING ARGUMENTS  
SERIOUSLY, WHO  
LISTEN KEENLY AND  
WHO APPROACH  
OTHERS WITH EMPATHY  
AND RESPECT.

Programmes	Admission Requirements	Duration & Fees
<b>Bachelor of Laws (LLB)</b>	KCSE mean grade of C+ or its equivalent, and B in English or Kiswahili Or At least three principal passes at 'A'-level or its equivalent Or Degree from a recognised university Or Credit pass in Diploma in Law from an accredited institution	<b>8 semesters</b> KSh. 85,000 per semester (Day & evening)
<b>Diploma In Law</b>	KCSE mean grade of C or its equivalent, and C+ in English or Kiswahili Or At least one principal pass at 'A'-level or its equivalent, Or Course offered by an accredited legal education provider Or Learning issued by the Council of Legal Education	<b>6 trimesters</b> KSh. 54,000 per trimester

## Career opportunities

When you study Law at MKU, you will have a wide range of career opportunities such as:

- Being a Legal practitioner
- Joining the Judiciary: as a judge, magistrate or legal researcher
- Working at the Attorney General's office
- Working at the Office of the Director of Public Prosecutions (ODPP) as a public prosecutor
- Working at Non-governmental organizations (NGO)
- Land registrars at the Ministry of Lands
- Academician



CIDLAW engages in research, publications, training, and capacity building. It also facilitates partnerships and linkages in professional courses such as the Certified Secretary (CS) course, Arbitration, and Mediation. Certified Secretary (CS) course is examined by KASNEB and is delivered online through all Mount Kenya University (MKU) campuses and ODEL centers.

Applicants must meet any one of the following qualifications: KCSE mean grade of C+ or higher • A diploma or degree from a recognized institution • KASNEB Technician, Diploma, or Professional Examination Certificate • IGCSE with an average grade of C in six subjects • Kenya Advanced Certificate of Education (KACE) with at least two principal passes and credits in Mathematics and English • An equivalent qualification recognized by KASNEB

The CS program consists of three levels: Foundation, Intermediate, and Advanced. Each level is divided into two sections, with each section comprising three units, totaling 15 units.

**Parklands School of Law** | Email: cidlaw@mku.ac.ke



*A new Scania Marcopolo bus set to strengthen sports and creative arts at the University.*

## SCHOOL OF EDUCATION

At the MKU School of Education, we appreciate that teachers are leaders who help shape the future of the society. Our education programmes which include certificate, diploma, bachelor, masters and PhD, provide teachers with knowledge, skills and opportunities to mould the future of the next generation of citizens.

Besides direct entry into education programmes for school leavers, MKU offers innovative and flexible Online web-based Distance, Institution-Based and Electronic Learning (DIBeL) programmes for practising classroom teachers and school administrators (senior teachers, heads of departments, deputies and heads of institution).



**WE ARE PASSIONATE ABOUT DEVELOPING THE VERY BEST TEACHERS WHO MAKE A DIFFERENCE TO CHILDREN, YOUNG PEOPLES' LIVES AND THE COUNTRY.**

## DEPARTMENT OF EDUCATIONAL MANAGEMENT & CURRICULUM STUDIES

education@mku.ac.ke

Programmes	Admission Requirements	Duration & Fees
<b>Bachelor of Education (Science)</b>	KCSE mean grade of C+ or its equivalent and C+ in two subjects of specialisation	<b>Full time 8 semesters</b> KSh. 55,000 per semester <b>DIBeL (School based)</b> KSh. 36,000 per semester
<b>Certificate in Subject Specialization</b>	Bachelor of Education/ Bachelor of Arts/ Bachelor of Science with one teaching subject or Bachelor of Education who need a Third Teaching subject. Must have scored a minimum of C+ (plus) in the teaching subject.	<b>Minimum 2 semesters</b> KSh. 30,000 per semester

## DEPARTMENT OF EDUCATIONAL PSYCHOLOGY & TECHNOLOGY (EPT)

<b>Bachelor of Education (Arts)</b>	KCSE mean grade of C+ or its equivalent and C+ in two subjects of specialisation	<b>Full time 8 semesters</b> KSh. 52,500 per semester <b>DIBeL (School based)</b> KSh. 33,000 per semester <b>Digital Learning</b> KSh. 50,000 per semester
-------------------------------------	--	--

## DEPARTMENT OF SPECIAL NEEDS EDUCATION & EARLY CHILDHOOD

Programmes	Admission Requirements	Duration & Fees
<b>B.Ed. in Special Needs Education (Primary Education)</b>	KCSE mean grade C+ (plus) Or A mean grade of C (plain) at KCSE and a KNEC Diploma in Special Needs Education from a recognized Institution.	<b>8 Semesters - Regular</b> KSh. 55,800 per semester <b>DIBeL (School based)</b> KSh. 36,000per semester
<b>B.Ed. in Special Needs Education (Secondary Education)</b> in the following specialization areas: <ul style="list-style-type: none"> <li>Hearing impairment</li> <li>Visual impairment</li> <li>Emotional and Behavioural Disorders</li> <li>Specific Learning Disabilities</li> <li>Physical, Neurological and other Health Impairments</li> </ul>	KCSE mean grade C+ (plus) and C+(Plus) in two teaching subjects Or Mean grade C (plain) at KCSE and a Diploma in Special Needs Education from a recognized Institution.	<b>8 semesters - Regular</b> KSh. 55,000 per semester <b>DIBeL (School based)</b> KSh. 36,000 per semester
<b>Diploma in Special Needs Education</b> Note: Eligibility for Registration by TSC will ONLY be after taking the degree.	KCSE mean grade of C (plain) Or C- or D+ with a certificate in Special needs education	<b>7 Trimesters</b> KSh. 29,550 per trimester (full time) <b>DIBeL (School based)</b> KSh. 27,000 per semester

Programmes	Admission Requirements	Duration & Fees
<b>Bachelor of Education Primary Education</b>	KCSE Mean grade of C+(Plus) and above or its equivalent	<b>8 semesters</b> <b>DIBel. (School based)</b> KSh. 33,000 per semester
<b>Bachelor of Education in Early Childhood Studies</b>	KCSE mean grade of C+ or its equivalent	<b>Full time 8 semesters</b> KSh. 55,550 per semester <b>DIBel. (School based)</b> KSh. 33,000 per semester <b>Digital Learning</b> KSh. 52,000 per semester
<b>Diploma in Early Childhood Studies</b>	KCSE mean grade of C or its equivalent, or a certificate in ECD from a recognised institution	<b>7 Trimesters</b> KSh. 29,550 per trimester <b>DIBel. (School based)</b> KSh. 24,000 per trimester

## Career opportunities

An education degree, diploma or certificate will prepare you for a wide range of careers in education such as the Teachers Service Commission, the Ministry of Education, the Higher Education Loans Board (HELB), Kenya National Examination Council (KNEC) and international organisations dealing with education such as the United Nations Education and Scientific and Cultural Organisation (UNESCO) the United Nations Children Fund (UNICEF) and non-governmental organisations. The available careers include:

- Teaching
- Education administration and management
- Programme managers
- Students' counsellors
- Education consultants
- Academic advisors
- Researchers

## SUBJECT COMBINATIONS IN EDUCATION COURSES – [education@mku.ac.ke](mailto:education@mku.ac.ke)

<i>Bachelor of Education Science</i>		<i>Bachelor of Education Arts</i>	
SUBJECT 1	SUBJECT 2	SUBJECT 1	SUBJECT 2
1 CHEMISTRY	BIOLOGY	1 GEOGRAPHY	CRE
2 CHEMISTRY	PHYSICS	2 GEOGRAPHY	HISTORY
3 CHEMISTRY	MATHEMATICS	3 GEOGRAPHY	IRE
4 PHYSICS	COMPUTER STUDIES	4 GEOGRAPHY	BUSINESS
5 PHYSICS	MATHEMATICS	5 GEOGRAPHY	KISWAHILI
6 BIOLOGY	GEOGRAPHY	6 KISWAHILI	CRE
7 BIOLOGY	AGRICULTURE	7 KISWAHILI	IRE
8 BIOLOGY	MATHEMATICS	8 HISTORY	KISWAHILI
		9 HISTORY	CRE
		10 ARABIC	IRE
		11 MATHEMATICS	BUSINESS STUDIES
		12 MATHEMATICS	GEOGRAPHY
		13 ENGLISH	LITERATURE
		14 MATHEMATICS	COMPUTER STUDIES
		15 HISTORY	IRE

<i>Digital Learning</i>	
SUBJECT 1	SUBJECT 2
1 ENGLISH	LITERATURE
2 BUSINESS STUDIES	GEOGRAPHY

<i>DSNE</i>			
ENGLISH	KISWAHILI	HISTORY	CRE



# SCHOOL OF PURE AND APPLIED SCIENCES

MKU School of Pure and Applied Sciences (SPAS) is focused towards providing pure and applied sciences as a vehicle for attaining and sustaining industrial development in Kenya and beyond. The School trains professional scientists in animal health and production sciences, biological sciences, physical and mathematical sciences.



CONCERN FOR MAN AND HIS FATE MUST ALWAYS FORM THE CHIEF INTEREST OF ALL TECHNICAL ENDEAVOURS. NEVER FORGET THIS IN THE MIDST OF YOUR DIAGRAMS AND EQUATIONS.

– ALBERT EINSTEIN

## DEPARTMENT OF NATURAL SCIENCES — [spas@mku.ac.ke](mailto:spas@mku.ac.ke)

Degree programmes under natural sciences include; Biotechnology, Environmental Science, Applied Biology, Industrial Chemistry, Laboratory Sciences, Statistics and Actuarial Science.

Programmes	Admission Requirements	Duration & Fees
<b>Bachelor of Science in Biotechnology</b>	KCSE Mean Grade of C+ (plus) or its equivalent, C+ (plus) in Biology and Chemistry Or Diploma in a relevant Discipline from an Institution of Higher Learning recognized by Mount Kenya University Senate.	<b>8 semesters</b> KSh. 60,600 per semester
<b>Bachelor of Science in Applied Biology</b>	KCSE Mean Grade of C+(plus) or equivalent grade and in addition, a C+ (plus) in Biology, Chemistry, Mathematics/Physics Or A relevant Diploma in from a recognized institution with a mean grade of C (plain) in KCSE.	<b>8 semesters</b> KSh. 60,600 per semester
<b>Bachelor of Science in Environmental Science</b>	KCSE Certificate with a minimum of C+ (plus) and C+(plus) in Chemistry, Biology, Mathematics/Physics Or Diploma in a relevant discipline from an institution of a higher learning recognized by MKU senate with a mean grade of C plain in KCSE.	<b>8 semesters</b> KSh. 60,600 per semester <b>Digital Learning</b> KSh. 41,000 per semester

## Career opportunities

Career opportunities exist as scientists / researchers in research institutes and organisations such as:

- Ministries dealing with environment and natural resources
- The Kenya Agricultural Research and Livestock Organisation (KARLO)
- The Kenya Plant Health Inspectorate service (KEPHIS)
- The International Livestock Research Institute (ILRI)
- The International Centre of Insect Physiology and Ecology (ICIPE)
- The United Nations Environmental Programme (UNEP)
- The World Health Organisation (WHO)
- The Kenya Wildlife Service (KWS)
- The Kenya Forest Service (KFS)
- The National Environmental Management Authority (NEMA)
- Remote sensing

<i>Programmes</i>	<i>Admission Requirements</i>	<i>Duration &amp; Fees</i>
<b>Bachelor of Science in Laboratory Technology</b>	KCSE Mean Grade of C+ (plus) or its equivalent, and C+ (plus) in Chemistry, Biology and Mathematics or Physics Or Diploma in relevant discipline from a recognized institution.	<b>8 semesters full-time</b> KSh. 55,000 per semester <b>Digital Learning</b> KSh. 41,000 per semester
<b>Bachelor of Science in Industrial Chemistry</b>	KCSE Mean Grade of C+ (plus) or its equivalent, C+ (plus) in Chemistry, C (plain) in English or Kiswahili. Or Diploma in relevant discipline from a recognized institution.	<b>8 semesters full-time</b> KSh. 55,000 per semester
<b>Bachelor of Science in Statistical Modelling with Data Science</b>	KCSE certificate with a minimum mean grade of C+ and grade C+ (plus) in Mathematics, Kiswahili/English. Or KACE certificate with a minimum of two Principals passes in subjects and O level Credit in Mathematics Or Diploma in relevant disciplines from an institution of higher learning recognized by the University Senate. Or A equivalent qualification recognized by the university Senate.	<b>8 semesters</b> KSh. 55,000 per semester
<b>Bachelor of Science in Actuarial Science</b>	KCSE Mean Grade of C+(Plus) or its equivalent, C (plain) in Mathematics, C (plain) in English or Kiswahili. Or Diploma in relevant discipline from a recognized institution.	<b>8 semesters</b> KSh. 55,000 per semester
<b>Diploma in Science Laboratory Technology</b>	KCSE Mean Grade of C (plain) or its equivalent, and C-(minus) in Chemistry and Biology Or Certificate in laboratory Technology Or Certificate in a relevant discipline from an institution of a higher learning recognized by MKU senate.	<b>5 trimesters - Full-time &amp; Digital Learning</b> KSh. 34,550 per trimester

## Career opportunities

Career opportunities exist in laboratories, chemical manufacturing and processing industrial plants for paper, petroleum, plastic, pesticides, herbicides, pharmaceuticals and food such as:

- Building materials and paints/coatings industries
- Paper manufacturing
- Plastics and advanced materials industries
- Analytical laboratories
- Quality control industries such as the Kenya Bureau of Standards
- Product development researchers
- Pharmaceutical industries
- Food manufacturing industries
- Pesticide manufacturing industries
- Research and academic institution

Graduates of actuarial sciences and statistics have rewarding careers as:

- Budget analysts
- Business analysts
- Research analysts
- Financial analysts
- Insurance underwriters
- Insurance claim adjusters
- Risk consultant analysts
- Data analysts
- Bio-statisticians
- Statistical analysts

## DEPARTMENT OF ANIMAL HEALTH AND PRODUCTION

The department offers courses in animal Health and Production, Animal Science, Agriculture and Rural Development.

Programmes	Admission Requirements	Duration & Fees
<b>Bachelor of Science in Animal Health and Production</b>	KCSE Mean Grade of C+ or, C+ plus in Biology/ Biological Sciences and any one of these subjects: Chemistry, Mathematics, Physics, Physical Sciences Or Diploma in a relevant field with at least c (Plain) KCSE Discipline from an Institution recognized by Mount Kenya University Senate.	<b>8 semesters full-time</b> KSh. 62,500 per semester
<b>Bachelor of Science in Agriculture and Rural Development</b>	KCSE Mean Grade of C+ or, C (Plain) in Biology/ Biological Sciences and any one of these subjects: Chemistry, Mathematics, Physics, or Agriculture Or Diploma in a relevant field with at least c (Plain) KCSE Discipline from an Institution recognized by Mount Kenya University Senate.	<b>8 semesters full-time</b> KSh. 59,550 per semester
<b>Bachelor of Science in Animal Science</b>	KCSE Mean Grade of C (Plus) or, C plain in Biology/ Biological Sciences and any of the following: Mathematics, Chemistry, Physics or Physical Sciences Or Diploma in Animal Health/Production/ Agriculture/Medical Laboratory Technology from an Institution recognized by Mount Kenya University Senate.	<b>8 semesters</b> KSh. 59,550 per semester
<b>Diploma in Animal Health and Production</b>	Kenya Certificate of Secondary Education (KCSE) with an aggregate of C and a grade of at least C in Biology or Biological Sciences and C- in Chemistry or Physical Science and C- in either Mathematics or Physics or Agriculture. Or KCE/EACE with a Division II and at least a credit in Biology or Biological Sciences, Chemistry or Physical Sciences and a credit in either Mathematics, Physics or Agriculture. Or Certificate in Animal Health and Production or Certificate in Animal Health and Range Management from Institutions recognized by KVB or Credit pass in at least a two-year certificate course in Agriculture/ Animal Production/Animal Husbandry/Range Management/Wildlife Health/Dairy Technology or equivalent from institutions recognized by Kenya National Qualifications Authority (KNQA) Or KACE level certificate with a principal pass in Biology and at least a subsidiary pass in Chemistry, Physics or Mathematics. Or Diploma in Biomedical discipline recognized by the KNQA Or Any other qualification equivalent to the above from an institution recognized by the KVB.	<b>6 Trimesters and 1 attachment</b> KSh. 39,550 per trimester

<i>Programmes</i>	<i>Admission Requirements</i>	<i>Duration &amp; Fees</i>
<b>Diploma in Animal Health and Production (Upgrading) - DUH</b>	A Certificate in Animal Health and Production / Animal Health & Range Management from institutions recognized by Kenya Veterinary Board (KVB) Or Upgrading Certificate to Animal Health.	<b>4 Trimesters Full-time</b> KSh. 39,550 per trimester
<b>Certificate in Animal Health and Production</b>	Kenya Certificate of Secondary School Education (KSCE) with an average mean grade of C- (minus) and minimum of a C- in Biology or Biological Sciences or equivalent as determined by the KVB or Minimum of one year certificate with a credit pass in Range Management/Wildlife Health/Dairy Management/Animal Science/Animal Husbandry/Animal Production/Leather Technology/Agriculture or equivalent as determined by the KVB Or At least a Certificate in Animal Health from an institution recognized by KVB.	<b>7 Trimesters Full-time</b> KSh. 29,550 per trimester
<b>Certificate in Artificial Insemination</b>	At least a Certificate in Animal Health from an institution recognized by KVB	<b>4 Weeks sessions in April, August, December</b> KSh. 38,600 per session

## Career opportunities

Graduates in Animal Health and Production have an opportunity to work in private clinical veterinary practice, veterinary pharmaceutical industry, scientific research, academia, animal and animal product industry, dairy industry; genetics and plants/animal breeding industry; and food processing. The following careers are available to graduates:

- Animal health technologist
- Animal health technician
- Animal nutritionist
- Animal genetics officer
- Agricultural officer
- Animal research scientist
- Agriculture research scientist
- Agronomist
- Entrepreneur (agrovet, agribusiness)
- Agricultural consultancy
- Crop protection and preservation officer



# SCHOOL OF COMPUTING & INFORMATICS

Computer technology pervades every aspect of our modern lives and each technological advance transforms the world in which we live and work. The MKU School of Computing and Informatics offers the much sought-after skills in Information Communication Technology (ICT), Informatics and Knowledge Management.

The programmes are offered at certificate, diploma and degree levels in three departments; Information Technology, Information Science and Knowledge Management and Enterprise Computing. The University has partnerships with global IT giants such as IBM and Oracle to make the courses even more industry-focused.



OUR COMPUTER SCIENCE COURSES COVER ALL ASPECTS OF MODERN ICT, GIVING STUDENTS SKILLS TO CREATE FUTURE TECHNOLOGY AND GAIN RELEVANT INDUSTRIAL EXPERIENCE.

## DEPARTMENT OF INFORMATION TECHNOLOGY – *deancikm@mku.ac.ke*

Programmes	Admission Requirements	Duration & Fees
<b>Bachelor of Science in Information Technology</b>	KCSE mean Grade C+ or its equivalent And Grade C in Mathematics/Physics/ Computer Studies and English/Kiswahili Or A relevant Diploma from a recognized institution and examination body.	<b>8 semesters full-time</b> KSh. 55,500 per semester <b>Digital Learning</b> KSh. 52,000 per semester
<b>Bachelor of Science in Computer Science</b>	KCSE mean Grade C+(plus) with C (plain) in Mathematics and English/Kiswahili Or A relevant Diploma from a recognized institution and examination body.	<b>8 semesters full-time</b> KSh. 55,500 per semester
<b>Bachelor of Science in Data Science and Artificial Intelligence</b>	KCSE mean Grade C+ (plus) with C+ (plus) in Mathematics and English	<b>8 semesters full-time</b> KSh. 55,500 per semester
<b>Bachelor of Science in Software Development</b>	KCSE mean Grade C+ (plus) with C (plain) in Mathematics and English	<b>8 semesters full-time</b> KSh. 55,500 per semester
<b>Bachelor of Science in Cyber Security &amp; Computer Networks</b>	KCSE mean Grade C+(plus) with C (plain) in Mathematics/Physics/Computer Studies and English/Kiswahili	<b>8 semesters full-time</b> KSh. 55,500 per semester
<b>Diploma in Information Technology</b>	KCSE mean grade of C- or its equivalent And Grade D+ in Mathematics/Physics/ Computer Studies and English/Kiswahili Or A relevant Certificate from a recognized institution and examination body.	<b>5 Trimesters</b> KSh. 34,550 per trimester
<b>Diploma in Computer Science</b>	KCSE Mean grade of C (Plain) with C- (minus) in Maths and English/Kiswahili Or A relevant Certificate from a recognized institution and examination body.	<b>5 Trimesters</b> KSh. 34,550 per trimester
<b>Diploma in Information Systems</b>	KCSE Mean grade of C- (minus) with D+(plus) in Math/Physics/computer Studies and English/Kiswahili Or A relevant Certificate recognized by the Mount Kenya University Senate.	<b>5 Trimesters</b> KSh. 34,550 per trimester
<b>Certificate in IT</b>	KCSE mean grade of D+ or its equivalent	<b>5 Trimesters</b> KSh. 34,550 per trimester
<b>Proficiency Certificate in IT</b>	KCSE mean grade of D+ or its equivalent	<b>1 trimester full-time</b> KSh. 34,550

## DEPARTMENT OF INFORMATION SCIENCE & KNOWLEDGE MANAGEMENT

Programmes	Admission Requirements	Duration & Fees
<b>Bachelor of Science in Information Science</b>	KCSE mean Grade C+(plus) with minimum of C (plain) in Mathematics/Physics and English/Kiswahili Or A diploma in a relevant field recognized by the Mount Kenya University Senate	<b>8 semesters full-time</b> KSh. 55,500 per semester <b>Digital Learning</b> KSh. 52,000 per semester

Programmes	Admission Requirements	Duration & Fees
<b>Diploma in Information Science</b>	KCSE mean Grade C (plain) with minimum of C (plain) in Mathematics/Physics/Computer Studies and English /Kiswahili Or A certificate in relevant discipline	<b>5 Trimesters</b> KSh. 29,550 per trimester
<b>Diploma in Archives and Records Management</b>	KCSE mean Grade C-(minus) Or A certificate in a relevant discipline from an institution recognized by Mount Kenya University Senate	<b>5 Trimesters</b> KSh. 29,550 per trimester <b>Digital Learning</b> KSh. 29,000 per trimester
<b>Diploma in Library Management</b>	KCSE mean Grade C-(minus) Or A certificate in a relevant discipline	<b>5 Trimesters</b> KSh. 29,550 per trimester <b>Digital Learning</b> KSh. 29,000 per trimester

## DEPARTMENT OF ENTERPRISE COMPUTING

Programmes	Admission Requirements	Duration & Fees
<b>Bachelor of Business Information Technology</b>	KCSE mean Grade C+ or its equivalent And Grade C in Mathematics/Physics/Computer Studies and English/Kiswahili Or A relevant Diploma from a recognized institution and examination body.	<b>8 semesters full-time</b> KSh. 55,500 per semester <b>Digital Learning</b> KSh. 52,000 per trimester
<b>Diploma in Business Information Technology</b>	KCSE mean grade of C- or its equivalent And Grade D+ in Mathematics/Physics/Computer Studies and English/Kiswahili Or A relevant Certificate from a recognized institution and examination body.	<b>5 Trimesters</b> KSh. 29,550 per trimester
<b>Certificate in Business Information Technology</b>	KCSE mean grade of D+ or its equivalent	<b>5 Trimesters</b> KSh. 29,550 per trimester

## Career opportunities

Career opportunities in Computing and Informatics at diploma, bachelor's and master's level cut across a wide-range of disciplines, including business, accounting, statistics, health sciences, mathematics, engineering, natural sciences and social sciences. Specifically MKU will prepare you for the following careers:

- Business analyst
- Software engineer
- Web developer
- Business manager
- Database administrators
- ICT manager
- Librarian
- Knowledge manager
- Data analyst
- Web content manager
- Records manager,
- Archives and special collections librarian
- Competitive intelligence analyst
- Information architect
- Information officer
- Computer support engineer
- Software engineer
- Web developer
- Network engineer
- Mobile application developer
- Security analyst
- Security engineer
- Security architect
- Security administrator
- Security software developer
- Cryptographer
- Cryptanalyst
- Security consultant
- Lecturer
- Researcher



# SCHOOL OF ENGINEERING ENERGY & THE BUILT ENVIRONMENT

Our engineering courses are essential to all industrial sectors in Kenya and around the world. Emphasis is placed on incorporating the latest technologies and ideas, and direct involvement of engineers from industry to ensure that our courses are industrially relevant and up-to-date.

You will be trained to develop successful careers in environmental and electrical, and electronic engineering. The School comprises two departments: Energy and Environmental Engineering and Electrical and Electronic Engineering.



STUDENTS ARE EQUIPPED WITH SKILLS TO INVESTIGATE THE BASIC PRINCIPLES OF SCIENTIFIC AND TECHNOLOGICAL DEVELOPMENT AND PARTICIPATE IN CREATING NEW TECHNOLOGY.

## DEPARTMENT OF ENERGY & ENVIRONMENTAL ENGINEERING –

[engineering@mku.ac.ke](mailto:engineering@mku.ac.ke)

Programmes	Admission Requirements	Duration & Fees
<b>Bachelor of Science in Energy and Environmental Technology</b>	K.C.S.E Mean grade C+ (Plus) and minimum of C plain in the following individual subjects: - Mathematics, Kiswahili or English, Physics or Chemistry and Geography or Biology. Or Relevant KNEC Diploma, KNQA Level 6 or its equivalent.	<b>8 semesters</b> Regular KSh. 59,550 per semester
<b>Bachelor of Science in Petroleum Exploration and Production</b>	K.C.S.E Mean grade C+ (Plus) and minimum of C plain in the following individual subjects: - Mathematics, Kiswahili or English, Physics, and Chemistry or Geography or Biology. Or Relevant KNEC Diploma, KNQA Level 6 or its equivalent.	<b>8 semesters</b> Full-time KSh. 59,550 per semester
<b>Bachelor of Science in Real Estate and Property Valuation</b>	K.C.S.E. or equivalent with mean grade C+ with a minimum of grade C+ in Mathematics or physics, English or Kiswahili, Chemistry or Biology or any of the technical subjects or any humanities. Or Diploma/KNQA Level 6 or equivalent in Land Management, Land Administration, Estate/Property Management, Estate Agency, Architecture, Building and Construction, Engineering, Geomatics, Land Surveying, Cartography, Geographical Information Systems, business, economics, finance or any other Relevant Diploma recognized by the university. Or Degree or its equivalent from a recognized University in the field of Land Administration, Land Management, Architecture, Engineering, Business, Design, Land Survey, Economics, Quantity Surveying, Construction Management, Commerce, Business, Economics.	<b>8 semesters (Regular)</b> KSh. 52,500 per semester

## DEPARTMENT OF ELECTRICAL & ELECTRONIC ENGINEERING

Programmes	Admission Requirements	Duration & Fees
<b>Bachelor of Science in Electronics and Computer Engineering Technology</b>	KCSE Mean grade C+ (Plus) and minimum of C plain in the following individual cluster subjects: Mathematics, Kiswahili or English, Physics, and Chemistry or Geography or Biology. Or KNEC Higher Diploma holders in Electrical and electronics engineering or its equivalent as shall be determined by university senate. ii) Diploma holders or KNQA Level 6 Holder in Electrical and electronics engineering from KNEC, MKU or its equivalent as shall be determined by the University senate.	<b>8 semesters full-time</b> KSh. 59,500 per semester

Programmes	Admission Requirements	Duration & Fees
<b>Diploma in Electrical and Electronic Engineering</b>	KCSE mean grade of C- or its equivalent, and C- in mathematics and physics or physical sciences. Or Certificate holders or KNQA Level 5 Holder in Electrical Engineering from KNEC, MKU or its equivalent as shall be determined by the University senate.	<b>9 Trimesters</b> Regular KSh. 34,550 per trimester
<b>Diploma in Medical Engineering</b>	KCSE mean grade of C- or its equivalent, and C- in mathematics and physics or physical sciences. ii) Certificate holders or KNQA Level 5 Holder in Medical engineering from KNEC, MKU or its equivalent as shall be determined by the University senate.	<b>9 Trimesters</b> Regular KSh. 34,550 per trimester

## Career opportunities

Graduates in engineering, energy and built environment have rewarding careers as:

- Electrical engineers
- Electronics engineers
- Medical engineers
- Computer manufacturing managers
- Computer design technologists
- Managers of computer networks and communication systems
- Electrical and electronic technicians
- Computer hardware technicians
- Electrical machines service and installation technicians
- Powerline construction technicians
- Power generation, transmission and distribution technicians
- Energy production managers
- Design technologists
- Petroleum energy surveyors
- Petroleum exploration experts /consultants
- Safety managers
- Petroleum drilling technologists



*Nakuru Campus – A centre of excellence in Agriculture and Science training*



Mount Kenya University Maritime Academy



## SCHOOL OF SOCIAL SCIENCES

The School of Social Sciences comprises the departments of Psychology, Humanities and Languages; Social and Development Studies; Journalism and Mass Communication; and Institute of Security Studies, Justice and Ethics. The departments offer postgraduate, undergraduate, diploma and certificate courses in various disciplines such as psychology, international relations, diplomacy, development studies, journalism and media studies, diplomacy, governance, security studies and criminology, peace studies and public administration.

We cultivate the ability of students to think critically, conduct research and draw logical conclusion while at the same time expressing their thoughts effectively, with the overall intention of providing them with learning experiences to position them to serve and function in a dynamic global environment.



WE ARE  
DEDICATED TO  
PROGRESSIVE  
THOUGHT  
AND CRITICAL  
ENGAGEMENT  
IN AN  
ENVIRONMENT  
OF RIGOROUS  
INTELLECTUAL  
STANDARDS.

## DEPARTMENT OF PSYCHOLOGY, HUMANITIES & LANGUAGES

The Department of Psychology offers diploma, bachelor's, master's and doctorate courses in counselling psychology.

<i>Programmes</i>	<i>Admission Requirements</i>	<i>Duration &amp; Fees</i>
<b>Bachelor of Arts in Counseling Psychology</b>	KCSE mean Grade C+ or Diploma/ Higher Diploma in Counseling Psychology or any related field.	<b>8 semesters</b> KSh. 52,500 per semester  <b>Digital Learning</b> KSh. 52,000 per semester
<b>Diploma in Counselling Psychology</b>	KCSE mean grade of C- or D+ with a Certificate in Counseling Psychology or any related field.	<b>5 Trimesters</b> KSh. 29,550 per trimester  <b>Digital Learning</b> KSh. 29,000 per semester

### Career opportunities

Careers are available in health and learning institutions, correctional and rehabilitation facilities, government departments, non-governmental organisations and research organisations as:

- Psychologist
- Psychiatrist
- Counsellor
- Probation officer
- Child protection officer
- Gender officer
- Researcher

## DEPARTMENT OF SOCIAL AND DEVELOPMENT STUDIES

The department offers bachelor's, master's and doctorate programmes in development and community studies, monitoring and evaluation, and sociology.

<i>Programmes</i>	<i>Admission Requirements</i>	<i>Duration &amp; Fees</i>
<b>Bachelor of Arts in Community Development</b>	KCSE mean grade of C+ or its equivalent	<b>8 semesters</b> KSh. 52,500 per semester  <b>Digital learning</b> KSh. 50,000 per semester
<b>Bachelor of Social Work and Administration</b>	KCSE mean grade of C+ or a diploma in a relevant field	<b>8 semesters</b> KSh. 52,500 per semester  <b>Digital learning</b> KSh. 50,000 per semester
<b>Bachelor of Arts in Development Studies</b>	KCSE mean grade of C+ or a diploma in a relevant field	<b>8 semesters full-time</b> KSh. 52,500 per semester  <b>Digital learning</b> KSh. 50,000 per semester

<i>Programmes</i>	<i>Admission Requirements</i>	<i>Duration &amp; Fees</i>
<b>Diploma in Community Development and Social Work</b>	KCSE mean grade of C- or a certificate in a relevant field	<b>5 trimesters</b> KSh. 29,550 per trimester <b>Digital learning</b> KSh. 29,000 per semester
<b>Certificate in Community Development and Social Work</b>	KCSE mean grade of D+ or its equivalent	<b>4 trimesters</b> KSh. 29,550 per trimester <b>Digital learning</b> KSh. 29,000 per semester

## Career opportunities

Graduates pursue a wide range of careers as:

- Business consultants
- Community development officer
- Diplomats
- Economic development advisors/officers
- Economic policy analysts
- Eco-tourism guide/agents
- Foreign services officers
- Fundraising officers
- Government relations advisors
- Immigration officers
- Intelligence officers
- International aid workers
- International communications experts
- International policy analysts
- International youth workers
- Market researchers
- Peace/human rights activists
- Policy/political risk analysts
- Program analysts
- Project coordinators
- Research assistant/researchers
- Teacher/professors
- Volunteer co-coordinator/recruiters
- International policy analysts
- International youth workers
- Market researchers
- Peace/human rights activists
- Policy/political risk analysts
- Programme analysts
- Project coordinators
- Research assistant/researchers
- Teacher/lecturers
- Volunteer Coordinator/Recruiters

## INSTITUTE OF SECURITY STUDIES, JUSTICE AND ETHICS

If you are interested in building a better and fairer society, criminology may be the course for you. You will engage with some of the most pressing dilemmas facing society today around crime, justice, social control, punishment, rights and citizenship.

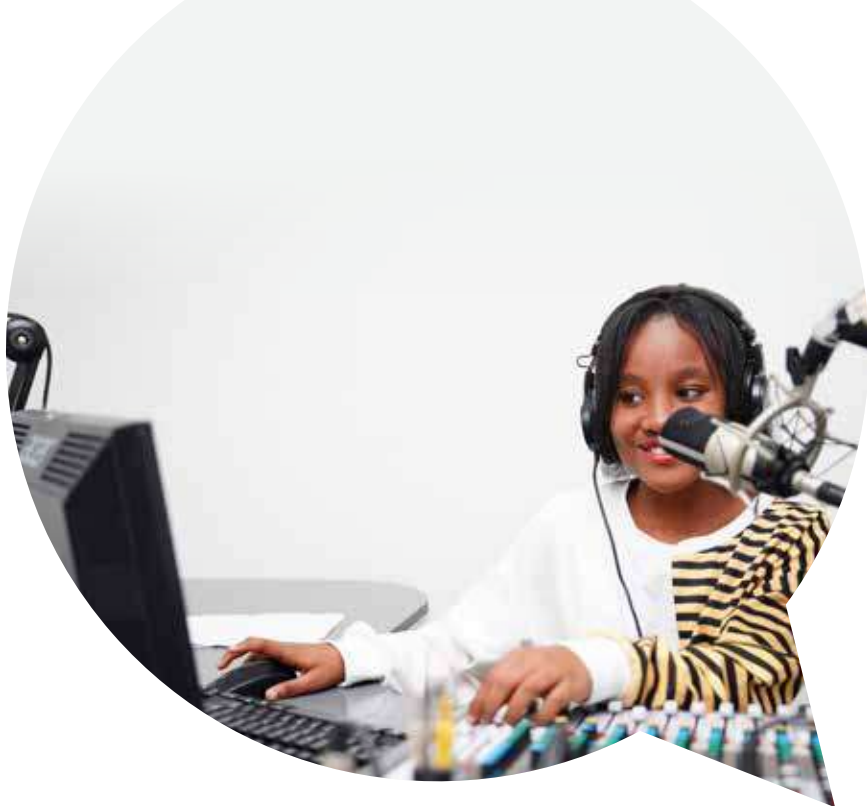
<i>Programmes</i>	<i>Admission Requirements</i>	<i>Duration &amp; Fees</i>
<b>Bachelor of Arts in Security Studies and Criminology</b>	KCSE mean grade of C+ or a diploma in a relevant field	<b>8 Trimesters</b> KSh. 52,500 per semester <b>Digital learning</b> KSh. 50,000 per semester
<b>Bachelor of Arts in Peace Studies and Conflict Resolution</b>	KCSE mean grade of C+ or a diploma in a relevant field	<b>8 Trimesters</b> KSh. 52,500 per semester <b>Digital learning</b> KSh. 52,000 per semester

<i>Programmes</i>	<i>Admission Requirements</i>	<i>Duration &amp; Fees</i>
<b>Bachelor of Arts in Justice and Security Studies</b>	KCSE mean grade of C+ or a diploma in a relevant field	<b>8 Trimesters</b> KSh. 55,500 per semester <b>Digital learning</b> KSh. 50,000 per semester
<b>Bachelor of Arts in Public Administration and Governance</b>	KCSE mean grade of C+ or a diploma in a relevant field	<b>8 Trimesters</b> KSh. 52,500 per semester <b>Digital learning</b> KSh. 50,000 per semester
<b>Bachelor of Arts in International Relations and Diplomacy</b>	KCSE mean grade of C+ or its equivalent	<b>8 Trimesters</b> KSh. 52,500 per semester
<b>Diploma in County Administration and Governance</b>	KCSE mean grade of C- or certificate in a relevant field	<b>5 Trimesters</b> KSh. 29,550 per trimester <b>Digital learning</b> KSh. 29,000 per semester
<b>Diploma in Peace Studies and Conflict Resolution</b>	KCSE mean grade of C- or certificate in a relevant field	<b>5 Trimesters</b> KSh. 29,550 per trimester <b>Digital learning</b> KSh. 29,000 per semester
<b>Diploma in Security Studies and Criminology</b>	KCSE mean grade of C- or certificate in a relevant field	<b>5 Trimesters</b> KSh. 29,550 per trimester <b>Digital learning</b> KSh. 29,000 per semester
<b>Certificate in Security Studies and Criminology</b>	KCSE mean grade of D+ or its equivalent	<b>4 Trimesters</b> KSh. 29,550 per trimester <b>Digital learning</b> KSh. 29,000 per semester

## Career opportunities

Career opportunities are to be found in the police, military intelligence, security firms, public administration, government agencies, non-governmental and international organisations such as the United Nations as:

- Military officer
- Police officer
- Intelligence officer
- Immigration officer
- Programme officer
- Human rights officer
- Administrator
- Lecturer



# JOURNALISM & MASS COMMUNICATION

This ground breaking course reflects the changes that have transformed journalism and the communication field (and by implication society) in recent years. You will learn from respected journalists and other industry experts, exploring what it means to work with new technologies in today's multimedia newsrooms and workplaces. The department offers certificate, diploma, bachelor and masters programmes in journalism, public relations, animation and motion pictures, film studies, mass media and communication, corporate communications and media management.



STUDENTS ARE TRAINED TO WORK IN ALL NEWS MEDIA, COVERING A WIDE RANGE OF COMPLICATED SUBJECTS AND BECOME LEADERS IN THE FAST-CHANGING NEWS MEDIA.

## DEPARTMENT OF JOURNALISM AND MASS COMMUNICATION

Programmes	Admission Requirements	Duration & Fees
<b>Bachelor of Arts in Film Production, Animation and Gaming</b>	KCSE mean grade of C+ (Plus) and C+ (plus) in either English or Kiswahili / Art & Design / Drawing & Design or KACE with two principals of which one is pass in one of the languages and one subsidiary  Or A Diploma in Film studies from a recognized institution.	<b>8 semesters</b> KSh. 60,000 per semester
<b>Bachelor of Arts in Digital Journalism and Mass Communication</b> Options: • <i>Electronic Media</i> • <i>Print Media</i> • <i>Public Relations</i> • <i>Advertising</i>	KCSE mean grade of C+(Plus) and C+ (plus) in either English or Kiswahili or KACE with 2 principal passes and one subsidiary pass in one of the languages Or Diploma in Mass Media from a recognized Institution.	<b>8 semesters</b> KSh. 52,500 per semester <b>Digital Learning</b> KSh. 50,000 per semester
<b>Diploma in Journalism and Mass Communication</b>	KCSE mean grade C-(minus) and C (Plain) in either English or Kiswahili. Or A certificate in a related field.	<b>6 Trimesters</b> KSh. 34,550 per trimester
<b>Diploma in Animation and Motion Graphics</b>	KCSE mean grade C-(minus) and C (plain) in either English or Kiswahili. Or A certificate in a related field.	<b>6 Trimesters</b> KSh. 39,550 per trimester
<b>Diploma in Public Relations and Diplomacy</b>	KCSE mean grade C-(minus) and C (plain) in either English or Kiswahili. Or A certificate in a related field.	<b>6 Trimesters</b> KSh. 29,550 per trimester
<b>Certificate in Public Relations</b>	KCSE mean grade of D+(plus) and grade C- (minus) in Kiswahili or English.	<b>5 Trimesters</b> KSh. 29,550 per trimester
<b>Certificate in Journalism and Mass Communication</b>	KCSE mean grade of D+(plus) and grade C- (minus) in Kiswahili or English.	<b>5 Trimesters</b> KSh. 34,550 per trimester

## Career opportunities

Career opportunities exist in journalism, production, film-making, corporate communications, public relations, communication consultancy and research, and diplomacy. Specifically, the following rewarding careers are available to graduates of the various certificate, diploma and degree programmes in journalism and Mass communication as:

- Video editor
- Reporter
- Photojournalist
- Camera operator
- Disc jockey
- Print and broadcast editor
- Sound technician
- Studio technician
- Public relations assistant/officer
- Website content developer
- Event organiser
- Guest relations officer
- Public relations officer
- Trainer
- TV/radio host
- Media manager
- Editor
- News anchor
- Copy writer/advertising creative
- Media researcher
- Social media administrator
- Photojournalist
- Communication officer/assistant
- Website content developer
- Event organiser
- Content developer (TV, radio, Online)
- Graphic designer
- Sound designer
- Film producer
- Film director
- Film researcher
- Cinematographer/videographer
- Animator
- Script writer
- Creative Advertiser



*Practical training at Cape media( TV47 and Radio 47)*



# SCHOOL OF BUSINESS AND ECONOMICS

MKU's School of Business and Economics is ranked as one of the top business schools in the region and offers academic programmes from certificate to PhD level. Our degrees, diplomas and certificates prepare you for the employment needs of the expanding world of business and professional financial services. Whether you want a corporate career or to build your own business empire, we train you to be creative, analytical, bold and inquisitive assumptions.

The School has three departments: Management, Accounting and Finance, and Economics.



THE CURRICULUM  
ESTABLISHES  
HARMONY BETWEEN  
RESEARCH AND  
INDUSTRY TO FOSTER  
AN ENTREPRENEURIAL  
MINDSET AND  
PREPARE STUDENTS  
FOR LIFETIME  
LEADERSHIP IN ANY  
INDUSTRY.

## DEPARTMENT OF MANAGEMENT – *sbe@mku.ac.ke*

<i>Programmes</i>	<i>Admission Requirements</i>	<i>Duration &amp; Fees</i>
<b>Bachelor of Science in International Business Administration</b>	KCSE mean grade C+ Or a Diploma in a relevant field	<b>8 semesters</b> KSh. 60,550 per semester <b>Digital Learning</b> KSh. 50,000 per semester
<b>Bachelor of Business Management</b> Options: <ul style="list-style-type: none"> <li>• <i>Marketing Management</i></li> <li>• <i>Human Resource Management</i></li> <li>• <i>Banking and Finance</i></li> <li>• <i>Entrepreneurship</i></li> <li>• <i>Risk &amp; Insurance Management</i></li> <li>• <i>International Business Management</i></li> <li>• <i>Supplies and Procurement</i></li> <li>• <i>Accounting</i></li> </ul>	KCSE mean Grade C+ OR relevant Diploma from a recognized institution or KNQF Level 6.	<b>8 semesters</b> KSh. 52,500 per semester <b>Digital Learning</b> KSh. 50,000 per semester
<b>Bachelor in Supply Chain and Logistics Management</b>	KCSE mean Grade C+ or relevant Diploma from a recognized institution or KNQF Level 6.	<b>8 semesters</b> KSh. 52,500 per semester <b>Digital Learning</b> KSh. 50,000 per semester
<b>Bachelor of Arts in Public Policy and Management</b>	KCSE mean Grade C+ or relevant Diploma from a recognized institution or KNQF Level 6.	<b>8 semesters</b> KSh. 52,500 per semester <b>Digital Learning</b> KSh. 50,000 per semester
<b>Bachelor of Organizational Management and Technology</b>	KCSE mean Grade C+ OR relevant Diploma from a recognized institution or KNQF Level 6.	<b>8 semesters</b> KSh. 52,500 per semester <b>Digital Learning</b> KSh. 50,000 per semester
<b>Diploma in Human Resource Management</b>	KCSE mean grade of C- or relevant Certificate from a recognized institution or KNQF Level 5.	<b>5 Trimesters</b> KSh. 29,550 per trimester <b>Digital Learning</b> KSh. 29,000 per semester
<b>Diploma in Business Management</b>	KCSE mean grade of C- or relevant Certificate from a recognized institution or KNQF Level 5.	<b>5 Trimesters</b> KSh. 29,550 per trimester <b>Digital Learning</b> KSh. 29,000 per semester
<b>Diploma in Maritime Transport Logistics</b>	KCSE mean grade of C- or its equivalent	<b>5 Trimesters</b> KSh. 34,550 per trimester <b>Digital Learning</b> KSh. 29,000 per semester
<b>Certificate in Maritime Transport Logistics</b>	KCSE mean grade of D+ or its equivalent	<b>5 Trimesters</b> KSh. 34,550 per trimester <b>Digital Learning</b> KSh. 29,000 per semester

<i>Programmes</i>	<i>Admission Requirements</i>	<i>Duration &amp; Fees</i>
<b>Diploma in Marketing Management</b>	KCSE mean grade of C- or its equivalent	<b>5 Trimesters</b> KSh. 29,550 per trimester <b>Digital Learning</b> KSh. 29,000 per semester
<b>Diploma in Entrepreneurship</b>	KCSE mean grade of C- or its equivalent	<b>5 Trimesters</b> KSh. 29,550 per trimester <b>Digital Learning</b> KSh. 29,000 per semester
<b>Diploma in Supplies and Procurement Management</b>	KCSE mean grade of C- or relevant Certificate from a recognized institution or KNQF Level 5.	<b>5 Trimesters</b> KSh. 29,550 per trimester <b>Digital Learning</b> KSh. 29,000 per semester
<b>Diploma in Project Management</b>	KCSE mean grade of C- or relevant Certificate from a recognized institution or KNQF Level 5.	<b>5 Trimesters</b> KSh. 29,550 per trimester <b>Digital Learning</b> KSh. 29,000 per semester
<b>Certificate in Business Management</b>	KCSE mean grade of D+ or a relevant craft Certificate from recognized institution or KNQF Level 4.	<b>5 Trimesters</b> KSh. 29,550 per trimester <b>Digital Learning</b> KSh. 29,000 per semester
<b>Certificate in Human Resource Management</b>	KCSE mean grade of D+ or a relevant craft Certificate from recognized institution or KNQF Level 4.	<b>5 Trimesters</b> KSh. 29,550 per trimester <b>Digital Learning</b> KSh. 29,000 per semester
<b>Certificate in Marketing Management</b>	KCSE mean grade of D+ or its equivalent	<b>5 Trimesters</b> KSh. 29,550 per trimester <b>Digital Learning</b> KSh. 29,000 per semester
<b>Certificate in Entrepreneurship</b>	KCSE mean grade of D+ or its equivalent	<b>5 Trimesters</b> KSh. 29,550 per trimester <b>Digital Learning</b> KSh. 29,000 per semester
<b>Certificate in Supplies and Procurement Management</b>	KCSE mean grade of D+ or a relevant craft Certificate from recognized institution or KNQF Level 4.	<b>5 Trimesters</b> KSh. 29,550 per trimester <b>Digital Learning</b> KSh. 29,000 per semester
<b>Certificate in Project Management</b>	KCSE mean grade of D+ or its equivalent	<b>5 Trimesters</b> KSh. 29,550 per trimester <b>Digital Learning</b> KSh. 29,000 per semester

## DEPARTMENT OF ECONOMICS

Programmes	Admission Requirements	Duration & Fees
<b>Bachelor of Science in Financial Economics</b>	KCSE mean Grade C+ or relevant Diploma from a recognized institution or KNQF Level 6.	<b>8 semesters</b> KSh. 52,500 per semester
<b>Bachelor of Economics and Policy</b>	KCSE mean Grade C+ or relevant Diploma from a recognized institution or KNQF Level 6.	<b>8 semesters</b> KSh. 52,500 per semester
<b>Bachelor of Economics and Data Analytics</b>	KCSE mean Grade C+ or relevant Diploma from a recognized institution or KNQF Level 6.	<b>8 semesters</b> KSh. 52,500 per semester
<b>Bachelor of Science in Financial Engineering</b>	KCSE mean Grade C+ or a relevant Diploma from a recognized institution or KNQF Level 6.	<b>8 semesters</b> KSh. 52,500 per semester
<b>Diploma in Financial Economics (DFE)</b>	KCSE mean grade of C- or its equivalent, and C- in Mathematics and English or Kiswahili	<b>8 semester</b> KSh. 29,550 per trimester
<b>Diploma in Economics (DEc)</b>	KCSE mean grade of C- or its equivalent, and C- in Mathematics and English or Kiswahili	<b>8 semester</b> KSh. 29,550 per trimester

## DEPARTMENT OF ACCOUNTING AND FINANCE

The department offers courses in Commerce, Financial Science, Banking, Accounting, Risk Management and Insurance.

Programmes	Admission Requirements	Duration & Fees
<b>Bachelor of Commerce</b> Options: <ul style="list-style-type: none"> <li>• Accounting &amp; Finance</li> <li>• Banking</li> <li>• Human resource management</li> <li>• Marketing management</li> <li>• Strategic management Production &amp; Operations Management Purchasing and Supplies Management.</li> <li>• Micro-finance</li> </ul>	KCSE mean Grade C+ or relevant Diploma from a recognized institution or KNQF Level 6.	<b>8 semesters</b> KSh. 52,500 per semester <b>Digital learning</b> KSh. 50,000 per semester
<b>Diploma in Financial Science</b>	KCSE C-(Minus) and C-(Minus) in Mathematics and English/Kiswahili or a relevant certificate.	<b>5 Trimesters</b> KSh. 29,550 per trimester
<b>Certificate in Finance Science</b>	KCSE mean grade D+(Plus) and D (Plain) in Mathematics and English/Kiswahili	<b>5 Trimesters</b> KSh. 29,550 per trimester

Programmes	Admission Requirements	Duration & Fees
<b>Diploma in Accounting</b>	KCSE C-(Minus) and C-(Minus) in Mathematics and English/Kiswahili or a relevant certificate.	<b>5 Trimesters</b> KSh. 29,550 per trimester
<b>Certificate in Accounting</b>	KCSE mean grade D+(Plus) and D (Plain) in Mathematics and English/Kiswahili	<b>5 Trimesters</b> KSh. 29,550 per trimester
<b>Diploma in Banking &amp; Finance</b>	KCSE mean grade of C- or relevant certificate from a recognized institution or KNQF Level 5.	<b>5 Trimesters</b> KSh. 29,550 per trimester <b>Digital learning</b> KSh. 29,000 per semester
<b>Certificate in Banking &amp; Finance</b>	KCSE mean grade of D+ or a relevant craft Certificate from recognized institution or KNQF Level 4.	<b>5 Trimesters</b> KSh. 29,550 per trimester <b>Digital learning</b> KSh. 29,000 per semester
<b>Diploma in Micro-Finance</b>	KSCSE C-(Minus) and C-(Minus) in Mathematics and English/Kiswahili Or A relevant Certificate	<b>5 Trimesters</b> KSh. 29,550 per trimester
<b>Diploma in Risk Management and Insurance</b>	KCSE C-(Minus) and C-(Minus) in Mathematics and English/ Kiswahili Or A relevant Certificate	<b>5 Trimesters</b> KSh. 29,550 per trimester
<b>Certificate in Risk Management and Insurance</b>	KSCSE D+(Plus) and D(Plain) in Mathematics and English/Kiswahili	<b>5 Trimesters</b> KSh. 29,550 per trimester

## Career Opportunities

The business and economics courses lead to careers such as:

- Accountant
- Marketer and business development officer
- Business/management/finance consultants
- Entrepreneurs
- Training and development specialist
- Procurement officer
- Financial analyst
- Advertising coordinator
- Sales agents
- Auditors
- Bank compliance officer
- Customer care officer
- Business administrators
- Benefit officer
- Bookkeeper
- Administrative officers
- Customer relations officer
- Supply chain analyst
- Purchasing agent
- Human resource practitioner /consultant
- Investment banker
- Bank compliance officer
- Credit analyst
- Equity trader
- Budget analyst
- Financial advisor
- Procurement staff assistant
- Distribution manager
- Clerical officer
- Logistics officer
- Program assistant
- Maritime safety officer
- Crew officer
- Cargo handler
- Deck officer
- Cruise staff
- Event coordinator
- Media planner
- Research assistant
- Project manager
- Monitoring and evaluation officer
- Business development coordinator
- Product marketing specialist
- Procurement officer
- Financial analyst
- Brand strategist
- Insurance underwriter
- Sales agent
- Claims analyst
- Economist
- Data analyst
- Actuary
- Tax consultants
- Cashier
- Accountants
- Import and export specialists



# SCHOOL OF HOSPITALITY, TRAVEL AND TOURISM MANAGEMENT

At the MKU School of Hospitality, Travel and Tourism Management, we are redefining how the world experiences hospitality and tourism. Our comprehensive academic programmes ranging from certificate and diploma levels to bachelor's and master's degrees are designed to equip students with both theoretical knowledge and practical skills for success in the global hospitality and tourism industry.

With strong industry linkages and experiential training in hospitality and tourism business management, our graduates emerge as innovative, professional leaders ready to make an impact.

Our ultra-modern training facilities include:

- Fully equipped training restaurants and demonstration kitchens
- Fully furnished guest house
- A state-of-the-art laundry and front office laboratory
- A tourism gallery, conference room, and spacious classrooms

The School also provides exceptional international exposure through its partnership with top European universities. Each year, outstanding students are selected to participate in the Erasmus+ Programme, with fully sponsored five-month exchange opportunities at Vincent Pol University in Poland and Tartu University in Estonia.

Join us and become part of a globally connected community shaping the future of hospitality and travel.

## DEPARTMENT OF HOSPITALITY MANAGEMENT – [hospitality@mku.ac.ke](mailto:hospitality@mku.ac.ke)

Programmes	Admission Requirements	Duration & Fees
<b>Bachelor of Science in Hospitality Management</b>	KCSE mean grade C+ or Diploma in a related field from a recognized institution, or KNQF Level 6.	<b>8 semesters</b> KSh. 57,500 per semester (Regular and Digital)
<b>Diploma in Hospitality Management</b>	KCSE mean grade C- or Certificate in a related field from a recognized institution, or KNQF Level 5.	<b>6 Trimesters</b> KSh. 37,550 per trimester
<b>Diploma in Culinary Arts</b>	KCSE mean grade C- or Certificate in a related field from a recognized institution, or KNQF Level 5.	<b>6 Trimesters</b> KSh. 42,550 per trimester
<b>Certificate in Food Production</b>	KCSE mean grade D+ or equivalent from a recognized institution, or KNQF Level 4.	<b>4 Trimesters</b> KSh. 34,550 per trimester

## DEPARTMENT OF TRAVEL AND TOURISM MANAGEMENT

Programmes	Admission Requirements	Duration & Fees
<b>Bachelor of Science in Travel and Tourism Management</b>	KCSE mean grade C+ or Diploma in a related field from a recognized institution, or KNQF Level 6.	<b>8 semesters</b> KSh. 57,500 per semester (Regular and Digital)
<b>Diploma in Travel and Tourism Management</b>	KCSE mean grade C- or Certificate in a related field from a recognized institution, or KNQF Level 5.	<b>6 Trimesters</b> KSh. 37,550 per trimester
<b>Certificate in Travel &amp; Tourism Operations</b>	KCSE mean grade D+ or equivalent from a recognized institution, or KNQF Level 4.	<b>4 Trimesters</b> KSh. 34,550 per trimester

## Career opportunities for Hospitality and Tourism Graduates

Graduates are easily absorbed in the hotel and hospitality industry. One can pursue a career as:

### Hotel and Lodging

- Hotel Manager
- Front Office Manager
- Guest Relations Executive
- Housekeeping Supervisor
- Reservations and Revenue Manager
- Concierge or Guest Services Agent

### Food and Beverage

- Restaurant Manager
- Executive Chef or Sous Chef
- Food & Beverage Supervisor
- Banqueting and Events Coordinator
- Barista or Mixologist
- Catering Manager

### Travel and Tourism

- Tour Operator / Travel Consultant
- Destination Manager

- Airline Customer Service Agent
- Ticketing and Reservations Officer
- Tour Guide / Cultural Interpreter
- Cruise Line Staff

### Events and Conference Management

- Events Planner
- Conference and Banqueting Manager
- Exhibition Coordinator
- Wedding and Special Events Consultant

### Recreation and Leisure

- Resort Manager
- Spa and Wellness Manager
- Theme Park Operations Coordinator
- Outdoor and Adventure Tourism Guide

### Corporate and Institutional Hospitality

- Hospitality Trainer or Educator
- Hospitality Consultant
- Corporate Travel Manager
- Facilities Manager
- Human Resources Officer in hospitality companies

### Entrepreneurship

- Owner of a restaurant, café, or catering business
- Travel agency or tour company founder
- Hospitality tech startup innovator

# MWAI KIBAKI CONVENTION CENTRE

The Mwai Kibaki Convention Centre has a capacity of 2000 people accommodated in three deck levels. It also has seminar rooms, offices and utility areas. It is designed to be used as a Convention Centre to serve a variety of purposes such as staging of plays, music, presentations, speeches etc. The design concept is a timeless shell where ideas and innovations are enveloped. The structure also rises gradually from a focal point of knowledge and graduates dynamically towards new inventions. The science behind the structure has taken into consideration high level of acoustics and design of detailed sight lines to ensure an all-inclusive audience participation. Whereas there is use of local materials, there is also incorporation of modern materials to ensure the audience enjoy best ambience.

To book or Reserve the facility  
Call: +254 709 153 000  
or Email: [multimedia@mku.ac.ke](mailto:multimedia@mku.ac.ke)





A PREFERRED  
DESTINATION  
FOR MEETINGS,  
INCENTIVES,  
CONFERENCES AND  
EXHIBITIONS (MICE).



# GROW YOUR TALENT WITH US

Mount Kenya University has rolled out a comprehensive plan to offer scholarships in sports and the arts in an effort geared towards producing well-rounded graduates.

MKU Chairman Simon Gicharu made the remarks during the launch of the tennis court at Thika Campus.

“You may have come here to study but you also need to play. We want to see you exploit your potential fully,” Gicharu told the students.

“I always say that an institution that does not allow its students to exploit their potential fully is not an institution of learning. We will introduce as many sporting activities as possible,” he added.

Gicharu said that sports can help young people deal with the pressures of life arising from studies, family backgrounds and society.

- *The Star*





**TOP 5**  
MKU RANKING AMONG TOP 5 BEST  
UNIVERSITIES IN SPORTS

# KUCCPS MKU Programme Codes

CODE	NAME
1279171	BACHELOR OF ARTS IN COMMUNITY DEVELOPMENT
1279295	BACHELOR OF ARTS IN INTERNATIONAL RELATIONS AND DIPLOMACY
1279181	BACHELOR OF ARTS IN DIGITAL JOURNALISM AND MASS COMMUNICATION
1279669	BACHELOR OF ARTS IN PEACE STUDIES AND CONFLICT RESOLUTION
1279659	BACHELOR OF ARTS IN PUBLIC POLICY AND MANAGEMENT
1279671	BACHELOR OF ARTS IN PUBLIC ADMINISTRATION AND GOVERNANCE
1279672	BACHELOR OF ARTS IN SECURITY STUDIES AND CRIMINOLOGY
1279244	BACHELOR OF BUSINESS INFORMATION TECHNOLOGY
1279151	BACHELOR OF BUSINESS MANAGEMENT
1279133	BACHELOR OF COMMERCE
1279674	BACHELOR OF COUNSELING PSYCHOLOGY
1279303	BACHELOR OF DEVELOPMENT STUDIES
1279312	BACHELOR OF ECONOMICS AND POLICY
1279334	BACHELOR OF SCIENCE IN FINANCIAL ECONOMICS
1279200	BACHELOR OF ECONOMICS AND DATA ANALYTICS
1279137	BACHELOR OF EDUCATION (SCIENCE)
1279135	BACHELOR OF EDUCATION ARTS
1279656	BACHELOR OF EDUCATION SPECIAL NEEDS EDUCATION SECONDARY EDUCATION
1279179	BACHELOR OF ARTS IN FILM PRODUCTION, ANIMATION AND GAMING
1279134	BACHELOR OF LAWS (LLB)
1279612	BACHELOR OF ORGANIZATIONAL MANAGEMENT AND TECHNOLOGY
1279131	BACHELOR OF MEDICINE AND BACHELOR OF SURGERY
1279129	BACHELOR OF PHARMACY
1279255	BACHELOR IN SUPPLY CHAIN AND LOGISTICS MANAGEMENT
1279732	BACHELOR OF PUBLIC HEALTH
1279108	BACHELOR OF SCIENCE (INDUSTRIAL CHEMISTRY)
1279107	BACHELOR OF SCIENCE IN ACTUARIAL SCIENCE

CODE	NAME
1279290	BACHELOR OF SCIENCE IN ANIMAL HEALTH AND PRODUCTION
1279591	BACHELOR OF SCIENCE IN CLINICAL MEDICINE AND COMMUNITY HEALTH
1279423	BACHELOR OF SCIENCE IN COMMUNITY HEALTH AND DEVELOPMENT
1279115	BACHELOR OF SCIENCE IN COMPUTER SCIENCE
1279455	BACHELOR OF SCIENCE IN DENTAL TECHNOLOGY
1279352	BACHELOR OF SCIENCE IN FINANCIAL ENGINEERING
1279681	BACHELOR OF SCIENCE IN HEALTH RECORDS AND INFORMATION TECHNOLOGY
1279657	BACHELOR OF SCIENCE IN HEALTH SYSTEMS MANAGEMENT
1279224	BACHELOR OF SCIENCE IN HOSPITALITY MANAGEMENT
1279150	BACHELOR OF SCIENCE IN INFORMATION SCIENCE
1279232	BACHELOR OF SCIENCE IN INFORMATION TECHNOLOGY
1279209	BACHELOR OF SCIENCE IN LABORATORY TECHNOLOGY
1279194	BACHELOR OF SCIENCE IN MEDICAL LABORATORY SCIENCES
1279132	BACHELOR OF SCIENCE IN NURSING
1279202	BACHELOR OF SCIENCE IN NUTRITION AND DIETETICS
1279218	BACHELOR OF SCIENCE IN ORAL HEALTH
1279709	BACHELOR OF SCIENCE IN STATISTICAL MODELLING WITH DATA SCIENCE
1279684	BACHELOR OF SCIENCE IN TRAVEL AND TOURISM MANAGEMENT
1279685	BACHELOR OF SOCIAL WORK AND ADMINISTRATION
1279683	BACHELOR OF SCIENCE IN REAL ESTATE AND PROPERTY VALUATION
1279350	BACHELOR OF SCIENCE IN ELECTRONICS AND COMPUTER ENGINEERING TECHNOLOGY
1279117	BACHELOR OF SCIENCE IN ELECTRICAL AND ELECTRONICS ENGINEERING
1279219	BACHELOR OF SCIENCE IN PETROLEUM EXPLORATION AND PRODUCTION
1279514	BACHELOR OF SCIENCE IN ENERGY AND ENVIRONMENTAL TECHNOLOGY

# GRADUATE STUDIES



*28th Graduation PhD Graduands*



*Prof. John J. Struthers confers a PhD Graduand*

# THE COLLEGE OF GRADUATE STUDIES & RESEARCH

In 2019, the University management established the College of Graduate Studies and Research to optimize the mutual synergy between graduate Studies and Research

## Our operating context

The international context is guided by the Sustainable Development Goals (SDGs), which were adopted by all United Nations Member States in September 2015 as a universal call to action to end poverty, protect the planet and ensure that all people enjoy peace and prosperity by 2030.

The regional context is guided by a number of factors including the African Union (AU) reform agenda which is primarily based on the AU Agenda 2063, a blue print for the economic development of the continent. The main aspirations of Agenda 2063 are a continent of good governance, democracy, respect for human rights, justice, rule of law and Africa whose development is people-driven, relying on the potential of African people, especially in respect

to the women, youth, older persons and caring for children. The agenda renews the continental commitment to the Pan African vision for 'an integrated, prosperous and peaceful Africa'.

Nationally, the operating context shall be guided by the Kenya Vision 2030, Third Medium Term Plan- MTP III (2018-2022), The Big Four Agenda, Commission for Education Standards and Guidelines 2014 and The National Commission for Science, Technology and Innovation strategic focus (2018-2022).

This operating context shall guide the development of priority areas in research and graduate training.

## Research excellence

In the 2017/2018 financial year, the University was ranked number four nationally in attracting postgraduate research grants from the National Research Fund (NRF). The NRF has so far awarded research grants amounting to KShs. 9,741,233 to our graduate students.

## PhD Milestones



The College of Graduate Studies and Research regularly shares available student research grants and scholarship opportunities with students and they are encouraged to apply. Grant writing workshops are held regularly to equip the students with the necessary research grant writing skills.

## Scholarships

Through partnerships, the University offers graduate scholarships in some selected programmes.

## Strategic partnerships and collaborations

The University has established strategic partnerships and collaborations with research institutions, Universities, hospitals and forges strong industry – academia linkages. These partnerships promote joint student supervision, utilization of joint research infrastructure, student exchange, and joint research grant proposal teams, amongst others

## Learning and training infrastructure

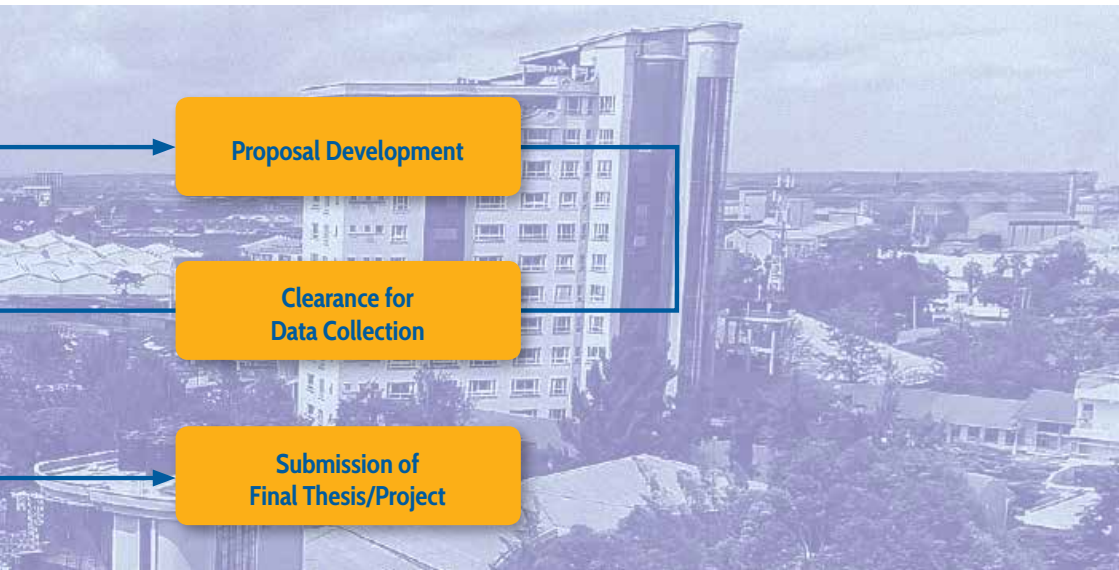
The university is keen in supporting learning for graduate students in a serene environment. The University has put up a state-of-the-art postgraduate centre which provides for seminar rooms, a resource centre, consultation rooms and a state-of-the-art Video Conferencing room

## Embracing technology

Through technology, graduate students interact with their supervisors regularly through technology, present research seminars and attend board of examiners meetings online

## Fee payment

The University allows an affordable and flexible fees payment in easy percentage instalments of 30:30:20:20.



Programme of Study	Admission Requirements	Duration & Fees
<b>MEDICAL SCHOOL – <i>medicine@mku.ac.ke</i></b>		
<b>Department of Medical Laboratory Sciences</b>		
<b>PhD in Medical Laboratory Sciences (Thesis only)</b> Specializations; Microbiology, Haematology, and Blood Transfusion Sciences, Clinical Chemistry, Parasitology, Histology and Cytology, Immunology and Virology	Master degree in the area of specialization	<b>3 years</b> KSh. 200,000 per year (Thesis Only)
<b>Master of Science in Medical Laboratory Sciences</b> Specializations; Microbiology, Haematology, and Blood Transfusion Sciences, Clinical Chemistry, Parasitology, Histology and Cytology, Immunology and Virology	Bachelor of Science in Medical Laboratory Sciences recognized by Senate of Mount Kenya University	<b>2 years</b> KSh. 90,000 per semester
<b>SCHOOL OF CLINICAL MEDICINE – <i>clinical@mku.ac.ke</i></b>		
<b>Department of Clinical Sciences</b>		
<b>Master of Clinical Medicine</b> Options: Forensic Medicine, Accidents and Emergency Medicine, Family Health	Bachelor of Science in Clinical Medicine Or MB ChB	<b>6 semesters</b> KSh. 109,550 per semester
<b>Department of Health Records Management</b>		
<b>Master of Science in Health Information Management</b>	Bachelor of Science in Health Records & Information Management	<b>2 Academic years</b> <b>4 Semesters</b> KSh. 90,000 per semester
<b>SCHOOL OF PUBLIC HEALTH – <i>publichealth@mku.ac.ke</i></b>		
<b>Department of Nutrition and Dietetics</b>		
<b>Master of Science in Nutrition and Dietetics (Clinical Nutrition, and Community Nutrition)</b>	Holder of Bachelor degree in Nutrition and Dietetics with a minimum of Second class honors upper division or Second Class Lower Division with a minimum of two years' work experience (Regular/Weekend)	<b>2 Academic Years</b> <b>4 semesters</b> KSh. 90,000 per semester
<b>Department of Community Health</b>		
<b>Master of Science in Community Health</b>	Bachelor degree with second class honours, upper division in related fields or second class honours with lower division with at least 2 years relevant work experience	<b>4 semesters</b> KSh. 90,000 per semester

<i>Programme of Study</i>	<i>Admission Requirements</i>	<i>Duration &amp; Fees</i>
<b>Master of Science in Health Education, Promotion and Development</b>	Bachelor degree with second class honours, upper division in related fields or second class honours with lower division with at least 2 years relevant work experience	<b>4 semesters</b> KSh. 90,000 per semester KSh. 90,000 (Digital)
<b>Department of Epidemiology and Biostatistics</b>		
<b>PhD. in Public Health</b> (By thesis & research only)	Relevant Master Degree, and Bachelor degree from a recognized University with at least Second Class Honours (Upper Division.)	<b>6 semesters</b> KSh. 200,000 per annum
<b>Master of Public Health (MPH)</b> Options: Epidemiology and Disease Control, International Health and Development, Monitoring And Evaluation	A holder of a relevant Bachelor degree with Second Class Honours, (Upper Division) in the following areas: Environment Health, Environmental Studies, Water and Civil Engineering, Pharmacy, per semester, Clinical Medicine, Biomedical Laboratory Technology, Biological Science- related Courses recognized by the University Senate OR Second Class Lower Division with two years of Work Experience.	<b>4 semesters</b> KSh. 90,000 per semester KSh. 90,000 for Digital
<b>Master of Public Health in Reproductive Health</b>	A holder of a relevant Bachelor degree with Second Class Honours, (Upper Division) in the following areas: Environmental Health, Environmental Studies, Water and Civil Engineering, Pharmacy, per semester, Clinical Medicine, Biomedical Laboratory Technology, Biomedical Sciences, Public Health, Nutrition and other Biological Science-related courses recognized by the University Senate.	<b>4 semesters</b> KSh. 90,000 per semester KSh. 90,000 for Digital KSh. 90,000 for Evening
<b>Department of Health Management and Informatics</b>		
<b>Master of Science in Health System Management</b>	Applicants must satisfy common University requirements for admission. In addition, candidates must have obtained Bachelor's degree with least an upper second class honours in the following areas; Health Systems Management, Health Service management, Business Administration, Commerce, Economics, Sociology and Anthropology; Psychology, per semester; Clinical Medicine; Biomedical Laboratory Technology; Biomedical Sciences; Public Health; Community Health; Nutrition and other relevant biological sciences and health related courses recognized by the University Senate. Or Candidate should have obtained lower second class and relevant work experience in Health System Management; Health Services Management; Business Administration; Commerce; Economics; Sociology and Anthropology; Psychology; per semester; Clinical Medicine; Biomedical Laboratory Technology; Biomedical Sciences; Public Health; Community Health; Nutrition and other relevant biological sciences and / or health related courses recognized by the University Senate.	<b>4 semesters</b> KSh. 90,000 per semester KSh. 90,000 for Digital

Programme of Study	Admission Requirements	Duration & Fees
--------------------	------------------------	-----------------

## SCHOOL OF NURSING - [nursing@mku.ac.ke](mailto:nursing@mku.ac.ke)

### Department of Nursing

<b>PhD in Nursing</b> (Thesis only)	Master degree in the area of specialization	<b>6 semesters</b> KSh. 600,000 whole course
<b>Master of Science in Nursing</b> Options: Midwifery Nursing, Medical Surgical Nursing, Critical Care Nursing, Nursing education, Leadership & Management	<ul style="list-style-type: none"> <li>Bachelor of Science in Nursing from Mount Kenya University or any other recognized university.</li> <li>Must have been practicing for at least TWO years post Bachelors in Science training.</li> <li>Must possess a valid practice license from the Nursing Council of Kenya.</li> </ul>	<b>2 years (Regular)</b> KSh. 105, 000 per semester (excluding university admission fees, project and practical fees). Research and clinical attachment KSh. 100,000

## SCHOOL OF LAW - [law@mku.ac.ke](mailto:law@mku.ac.ke)

### Department of Law

<b>Master of Laws (LLM)</b> Options: <ul style="list-style-type: none"> <li>Intellectual Property and ICT</li> <li>International Human Rights and Democracy</li> <li>International Business and Investment Law</li> </ul>	<ol style="list-style-type: none"> <li>A holder of a Bachelor of Laws degree with upper second-class honors from a recognized University</li> <li>A graduate of any recognized University whose degree has been accepted by Senate to be equivalent of a Bachelor of Laws with upper second-class honors of Mount Kenya University</li> <li>A holder of a Bachelor of Laws degree of Mount Kenya University or its accepted equivalent who, although not having achieved upper second class honors, has satisfied Senate, on the basis of research and publications, that he/she possesses equivalent academic qualifications.</li> <li>A holder of a Bachelor of Laws degree with second class (Lower Division) with a relevant working experience/practice of at least three years and above.</li> </ol>	<b>Four (4) academic semesters over a period of 2 years</b> <i>Annual Intakes: September</i> KShs. 150,000 per semester. In addition KSh. 12,000 statutory fees is payable in the 1st Semester for every calendar year.
--	--	--

## SCHOOL OF ENGINEERING, ENERGY & BUILT ENVIRONMENT

- [seebe@mku.ac.ke](mailto:seebe@mku.ac.ke)

### Department of Energy and Environmental Engineering

<b>MSc. Renewable Energy and Environmental Engineering</b>	Bachelor Degree Second Class Honours Upper Division or Lower Division with 2 years of relevant work experience	<b>4 semesters</b> KSh. 90,000 per semester (Regular and Weekends)
--	--	---

Programme of Study	Admission Requirements	Duration & Fees
<b>SCHOOL OF EDUCATION</b> - <a href="mailto:education@mku.ac.ke">education@mku.ac.ke</a>		
<b>Department of Educational Management and Curriculum Studies</b>		
<b>PhD in Education</b> Options: <ul style="list-style-type: none"> <li>• <i>Administration Management and Leadership</i></li> <li>• <i>Curriculum Studies</i></li> <li>• <i>Instructional Technology Educational Planning</i></li> <li>• <i>Philosophy of Education</i></li> <li>• <i>Economics of Education</i></li> </ul>	Master of Education in a relevant field	<b>3 years</b> KSh. 750,000 @ 250,000 per annum (Coursework, Examination and Thesis) Intake: September
<b>Master of Education</b> Options: <ul style="list-style-type: none"> <li>• <i>Administration, Management and Leadership</i></li> <li>• <i>Curriculum Studies</i></li> <li>• <i>Instructional Technology</i></li> <li>• <i>Educational Planning</i></li> <li>• <i>Philosophy of Education</i></li> <li>• <i>Economics of Education</i></li> </ul>	Bachelor of Education with at least a Second Class Honours Upper Division or its equivalent from a recognized university. Or Bachelor of Education with second Class, Honours Lower Division or its equivalent from a recognized university with at least two years teaching experience Or Bachelor of Arts/Science degree with a postgraduate Diploma in Education from a recognized university.	<b>Full time, Distance, Institution-Based and Electronic Learning (DIBEL), Digital Learning</b>  <b>4 semesters</b> KSh. 90,000 per semester
<b>Department of Educational Psychology and Technology (EPT)</b>		
<b>Doctor of Philosophy in Education</b> Options: <ul style="list-style-type: none"> <li>• <i>Sociology of Education</i></li> <li>• <i>Educational Psychology</i></li> <li>• <i>Educational Counselling Psychology</i></li> </ul>	Master of Education in relevant field	<b>3 years</b> KSh. 750,000 @250,000 per Annum (Course work, Exam and Thesis)
<b>Master of Education</b> Options: <ul style="list-style-type: none"> <li>• <i>Sociology of Education</i></li> <li>• <i>Educational Psychology</i></li> <li>• <i>Instructional Technology</i></li> <li>• <i>Educational Technology</i></li> <li>• <i>Philosophy of Education</i></li> </ul>	A holder of Bachelor of Education with at least Second Class Honours upper Division or its equivalent from a reorganized University Or Bachelor of Education Second Class Honours Lower division with a minimum of 2 years relevant working experience	<b>Full time, Distance, Institution-Based and Electronic Learning (DIBEL), Digital Learning</b>  <b>4 semesters</b> KSh. 90,000 per semester

Programme of Study	Admission Requirements	Duration & Fees
<b>Department of Special Needs Education</b>		
<b>Master of Education in Special Needs Education (MSE)</b> Option: <ul style="list-style-type: none"> <li>• Visual Impairment</li> <li>• Hearing Impairment</li> <li>• Autism Spectrum Disorder</li> <li>• Physical Handicap &amp; Other Health Impairment</li> <li>• Gifted &amp; Talented</li> <li>• Specific Learning Disabilities</li> <li>• Inclusive Education</li> <li>• Emotional &amp; Behavioural Disorders</li> <li>• Deaf</li> </ul>	<p>A holder of Bachelor of Education in Special Needs (BED-SNE) with at least Second Class Upper Division or its equivalent from a University recognized by the Commission for University Education (CUE).</p> <p>A holder of Bachelor of Education in Special Needs Education with Second Class lower division or its equivalent from a university recognized by the Commission for University Education (CUE) with at least two years of teaching experience.</p> <p>A holder of Bachelor of Education degree from a recognized University with Second Class honours Upper Division or its equivalent from a University recognized by the Commission of University Education (CUE) with two years teaching experience in a special school or unit.</p> <p>A holder of Bachelor of Arts or Bachelor of Science degree from a recognized University with at least Second Class honours Upper Division or its equivalent from a University recognized by the Commission for University Education (CUE) and at least two years of teaching experience in a special school or unit.</p>	<p><b>Full time, Distance, Institution-Based and Electronic Learning (DIBEL), Digital Learning</b></p> <p><b>4 semesters</b> KSh. 90,000 per semester</p>
<b>Department of Early Childhood Education</b>		
<b>Doctor of Philosophy (Early Childhood Studies)</b>	Master of Education degree in Early Childhood Studies or a relevant field.	<p><b>3 years</b> KSh. 750,000 @250,000 per Annum (Coursework, Examination and Thesis) Intake: September</p>
<b>Master of Education in Early Childhood Studies</b>	Holder of Bachelor degree in Education (ECS) or a relevant field from a recognized university and at least Upper Second Class Honours. Or Bachelor degree in Early Childhood Studies from a recognized university with a minimum of Second Class Honours Lower Division qualification with a minimum of 2 years work experience.	<p><b>Full time, Distance, Institution-Based and Electronic Learning (DIBEL), Digital Learning</b></p> <p><b>4 semesters</b> KSh. 90,000 per semester</p>
<b>Postgraduate Diploma in Education</b>	Bachelor of Arts/Bachelor of Science with a KCSE C+ (Plus) and above & KCSE C+ (Plus) in the two subjects of specialization	<p><b>(DIBEL) 3 semesters</b> KSh. 32,000 per semester <b>Digital</b> KSh.. 50,000 per semester</p>

Programme of Study	Admission Requirements	Duration & Fees
<b>SCHOOL OF BUSINESS AND ECONOMICS - <a href="mailto:sbe@mku.ac.ke">sbe@mku.ac.ke</a></b>		
<b>Department of Management</b>		
<b>Doctor of Philosophy in Business Administration</b> Options: <ul style="list-style-type: none"> <li>• <i>Entrepreneurship and Small Business Management</i></li> <li>• <i>Human Resource and Organizational Management</i></li> <li>• <i>Marketing Management, Strategic Organizational Leadership and Management</i></li> <li>• <i>Production and Operation Management</i></li> <li>• <i>Strategic Organizational Leadership and Management</i></li> </ul>	Master Degree in the area of specialization from a recognized university	<b>6 semesters</b> KSh. 250,000 per Annum (coursework and Thesis) KSh. 750,000 KSh. 600,000 (Thesis only)
<b>Master of Science in Procurement and Supplies Management</b>	Bachelor degree from a recognized university with a minimum of Second Class Honours Upper Division. <b>Or</b> Bachelor degree from a recognized University with a minimum of Second Class Honours Lower Division with a minimum of 2 years of relevant work experience.	<b>Full time, Digital Learning</b> <b>4 semesters</b> KSh. 90,000 per semester
<b>Master of Arts in Public and Management</b> Options: Public Policy & Administration, Local Government Administration, Financial Management, Social Services Management, Community Development, NGO Management (Regular & Evening Programmes)	Bachelor degree in related discipline from a recognized university with a minimum of Second Class Honours Upper Division. <b>Or</b> Second Class Honours Lower Division with a minimum of 2 years work experience.	<b>Full time, Digital Learning</b> <b>4 semesters</b> KSh. 90,000 per semester
<b>Master of Science in Human Resource Development</b>	Bachelor degree in relevant field from a recognized University with at least Second Class Honours Upper Division <b>OR</b> Second Class Honours with Lower Division and two years of relevant work experience	<b>Full time, Digital Learning</b> <b>4 semesters</b> KSh. 90,000 per semester
<b>Master of Science in Project Planning and Management</b>	Bachelor degree in relevant field from a recognized university with at least Second Class Honours Upper Division <b>Or</b> Second Class Honours Lower Division and two years of relevant work experience.	<b>Full time, Digital Learning</b> <b>4 semesters</b> KSh. 90,000 per semester

<i>Programme of Study</i>	<i>Admission Requirements</i>	<i>Duration &amp; Fees</i>
<b>Postgraduate Diploma in Project Planning and Management</b>	Bachelor's degree from a recognized University	<b>3 semesters</b> KSh. 50,000 per semester (Regular & Digital)
<b>Department of Economics</b>		
<b>Master of Arts in Economics</b>	Bachelor degree in related discipline from a recognized university with a minimum of Second Class Honours Upper Division qualification. <b>Or</b> Second Class Honours Lower Division with a minimum of 2 years relevant work experience.	<b>4 semesters</b> KSh. 90,000 per semester
<b>Department of Accounting and Finance</b>		
<b>Doctor of Philosophy in Business Administration (Accounting &amp; Finance)</b>	Master Degree in the area of specialization from a recognized University	<b>6 semesters</b> KSh. 250,000 per Annum (coursework and Thesis) KSh. 750,000 KSh. 600,000 (Thesis only)
<b>Master of Science in Accounting</b>	Bachelor degree in a relevant field from a recognized university with at least Second Class Honours Upper Division <b>Or</b> Second Class Honours Lower Division and two years of relevant work experience.	<b>4 semesters</b> KSh. 90,000 per semester
<b>Master of Business Administration</b> <ul style="list-style-type: none"> <li>• Accounting</li> <li>• Finance</li> <li>• Human Resource Management</li> <li>• Marketing Management</li> <li>• Strategic Management</li> <li>• Production and Operations Management</li> <li>• Small Business Management</li> </ul>	Bachelor degree in relevant field from a recognized University with at least Second Class Honours Upper Division <b>Or</b> Second Class Honours Lower Division and two years of relevant work experience.	<b>Full time, Digital Learning</b> <b>4 semesters</b> KSh. 90,000 per semester
<b>Executive Master of Business Administration</b> (MKU in partnership with Makerere University Business School)	A first Degree in any field of study from a recognized University <b>Or</b> A minimum of 4 years of managerial work experience <b>Or</b> Any other qualification recognized by Mount Kenya University Senate	<b>Module 1- (8 months)</b> KSh. 300,000 <b>Module 2- (5 months)</b> KSh. 250,000 <b>Module 3- (5 months)</b> KSh. 300,000
<b>Master of Science in Finance</b>	Bachelor degree in a relevant field from a recognized university with at least Second Class Honours Upper Division <b>Or</b> Second Class Honours Lower Division and two years of relevant work experience	<b>4 semesters</b> KSh. 90,000 per semester

Programme of Study	Admission Requirements	Duration & Fees
<b>SCHOOL OF PURE AND APPLIED SCIENCES - <a href="mailto:spas@mku.ac.ke">spas@mku.ac.ke</a></b>		
<b>Department of Natural Sciences</b>		
<b>PhD in Applied Entomology</b> (Thesis only)	Master degree in a relevant field <b>Or</b> Equivalent qualification recognized by the Mount Kenya University Senate	<b>3 years</b> Total cost of program KSh. 600, 000 KSh. 200,000 per year
<b>PhD in Ecology</b> (Thesis only)	Master degree in a relevant field <b>Or</b> Equivalent qualification recognized by the Mount Kenya University Senate	<b>3 years</b> Total cost of program KSh. 600, 000 KSh. 200,000 per year.
<b>PhD in Zoology</b> (Thesis only)	Master degree in a relevant field <b>Or</b> Equivalent qualification recognized by Mount Kenya University Senate	<b>3 years</b> Total cost of program KSh. 600,000 KSh. 200,000 per year
<b>PhD in Conservation Biology</b> (Thesis only)	Master degree in a relevant field <b>Or</b> Equivalent qualification recognized by the Mount Kenya University Senate.	<b>3 years</b> Total cost of program KSh. 600,000 KSh. 200,000 per year
<b>PhD in Biochemistry</b> (Thesis only)	Master degree in a relevant field <b>Or</b> Equivalent qualification recognized by the Mount Kenya University Senate	<b>3 years</b> Total cost of program KSh. 600, 000 KSh. 200, 000 per year
<b>PhD in Molecular Biology</b> (Thesis only)	Master degree in a relevant field <b>Or</b> Equivalent qualification recognized by the Mount Kenya University Senate	<b>3 years</b> Total cost KSh. 600, 000
<b>Master of Science in Applied Entomology</b>	Bachelor degree in relevant field with at least Second Class Honours (Upper Division) <b>Or</b> Equivalent qualification recognized by the Mount Kenya University Senate	<b>Full time, Digital Learning</b> <b>4 semesters</b> KSh. 90,000 per semester
<b>Master of Science in Ecology and Conservation Biology</b>	Bachelor degree in relevant field with a Second Class Honours (Upper Division) <b>Or</b> Equivalent qualification recognized by the Mount Kenya University Senate	<b>Full time, Digital Learning</b> <b>4 semesters</b> KSh. 90,000 per semester
<b>Master of Science in Biotechnology</b>	Bachelor degree in relevant field with a Second Class Honours (Upper Division) <b>Or</b> Equivalent qualification recognized by the Mount Kenya University Senate.	<b>Full time, Digital Learning</b> <b>4 semesters</b> KSh. 90,000 per semester

Programme of Study	Admission Requirements	Duration & Fees
<b>Master of Science in Bioethics</b>	Bachelor degree in relevant field with a Second Class Honours (Upper Division) <b>Or</b> Equivalent qualification recognized by the Mount Kenya University Senate	<b>4 semesters</b> KSh. 90,000 per semester (Regular & Weekend)
<b>Postgraduate Diploma in Bioethics</b>	Bachelor's degree in any field from Mount Kenya University <b>Or</b> Any other institution recognized by the Mount Kenya University Senate	<b>3 semesters</b> KSh. 50,000 per semester (Regular & Weekend)
<b>PhD in Chemistry</b> (Thesis only) Options: • Analytical Chemistry • Organic Chemistry	Master degree from a recognized University	<b>3 years</b> KSh. 200,000 per year KSh. 100,000 per semester
<b>PhD in Natural Products Chemistry</b> (Thesis only)	Master degree in a relevant field <b>Or</b> Equivalent qualification recognized by the Mount Kenya University Senate	<b>3 years</b> KSh. 200,000 per year KSh. 100,000 per semester
<b>Master of Science in Chemistry</b>	Bachelor degree in a relevant field with a Second Class Honours (Upper Division) <b>Or</b> Second Class Honours (Lower Division) with at least two years of documented relevant work or research experience	<b>4 semesters</b> KSh. 90,000 per semester (Regular & Weekend)
<b>Master of Science in Statistical Modelling with Data Science</b>	Bachelor degree with Second Class Honours (Upper Division) in Bachelor of Science in Actuarial Science, Bachelor of Science in Statistics, Bachelor of Science in Mathematics <b>Or</b> an equivalent qualification recognized by the Mount Kenya University Senate. <b>Or</b> Second Class (Lower Division) with two years' of relevant working experience.	<b>Full time</b> <b>4 semesters</b> KSh. 90,000 per semester
<b>Department of Animal Health and Production</b>		
<b>PhD in Immunology</b> (Thesis only)	Master degree in a relevant field recognized by the Mount Kenya University Senate	<b>3 years</b> Total cost of program KSh. 600,000 200,000 per year

Programme of Study	Admission Requirements	Duration & Fees
<b>SCHOOL OF COMPUTING AND INFORMATICS - <i>sci@mku.ac.ke</i></b>		
<b>Department of Information Technology</b>		
<b>PhD in Information Technology</b>	Master degree in a relevant field recognized by the Mount Kenya University Senate.	<b>3 years</b> KSh. 200,000 per year
<b>PhD in Computer Science</b>	Master degree in a relevant field recognized by the Mount Kenya University Senate.	<b>3 years</b> KSh. 200,000 per year
<b>PhD in Information Systems</b>	Master degree in a relevant field recognized by the Mount Kenya University Senate.	<b>3 years</b> KSh. 200,000 per year
<b>Master of Science in Cyber Security</b>	Bachelor degree with Second Class Honours (Upper Division) in a computer related course <b>Or</b> Equivalent qualification recognized by the Mount Kenya University Senate	Course work, examination and Thesis or Project. <b>4 semesters</b> KSh. 90,000 per semester (Full time)
<b>Master of Science in Information Technology (MSc. IT)</b>	Bachelor degree with Second Class Honours (Upper Division) in a computer related course <b>Or</b> Equivalent qualification recognized by the Mount Kenya University Senate.	Course work, examination and Thesis or Project. <b>4 semesters</b> KSh. 90,000 per semester (Full time)
<b>Master of Science in Data Science and Artificial Intelligence</b>	Bachelor degree in Information Technology in a computer related course <b>Or</b> Equivalent qualification recognized by the Mount Kenya University Senate.	Course work, examination and Thesis or Project. <b>4 semesters</b> KSh. 90,000 per semester (Full time)
<b>Department of Information Science and Knowledge Management</b>		
<b>PhD in Knowledge Management (Thesis only)</b>	Master degree in a relevant field recognized by the Mount Kenya University Senate.	<b>3 years</b> KSh. 200,000 per year
<b>Master of Information Science (MIS)</b>	Bachelor degree with Second Class Honours (Upper Division) in information Science <b>Or</b> Equivalent qualification recognized by the Mount Kenya University Senate	Course work, examination and Thesis or Project. <b>4 semesters</b> KSh.90,000 per semester (Full time)
<b>Department of Enterprise Computing</b>		
<b>PhD in Enterprise Computing (Thesis only)</b>	Master degree in a relevant field recognized by the Mount Kenya University Senate.	<b>3 years</b> KSh. 200,000 per year

Programme of Study	Admission Requirements	Duration & Fees
<b>SCHOOL OF SOCIAL SCIENCES - <a href="mailto:socialsciences@mku.ac.ke">socialsciences@mku.ac.ke</a></b>		
<b>Department of Psychology</b>		
<b>PhD in Counselling Psychology</b>	Master of Arts in Counselling Psychology from a recognized University	<b>Three years</b> KSh. 750,000 Course work, Exams & Thesis Only KSh. 600,000 Thesis Only
<b>Master of Arts in Counselling Psychology</b>	Bachelor degree in Counselling Psychology from a recognized university with a minimum of Second Class Honours (upper Division) <b>Or</b> Second Class Honours (Lower Division) with at least two years of documented relevant work or research experience	<b>Full time, Digital Learning</b> <b>4 semesters</b> KSh. 90,000 per semester
<b>Postgraduate Diploma in Counselling Psychology</b>	Bachelor's degree in any field from Mount Kenya University <b>Or</b> Any other institution recognized by the Mount Kenya University Senate	<b>3 semesters</b> KSh. 49,550 per semester
<b>Department of Humanities and Languages</b>		
<b>PhD in Religious Studies (Coursework and Thesis)</b>	Master of Arts degree in Religious Studies <b>Or</b> Equivalent qualification from a recognized University	<b>3 years</b> Total cost of program KSh. 750,000 KSh. 250,000 per year
<b>PhD in Literature in English (Thesis only)</b>	Master of Arts in Literature	<b>3 years</b> KSh. 200,000 per year
<b>PhD in Kiswahili (Thesis only)</b>	Master of Arts in Kiswahili from a recognized University	<b>3 years</b> KSh. 200,000 per year
<b>PhD in English &amp; Linguistics (Thesis only)</b>	Master of Arts in English & Linguistics from a recognized University.	<b>3 years</b> KSh. 200,000 per year
<b>Master of Arts in Religious Studies</b> Option: • <i>Christian</i> • <i>Islamic</i> • <i>Traditional African Religion</i>	Bachelor Degree with at least Second Class Honours (Upper Division) in a related field. <b>Or</b> Second Class Honours Lower Division with two years of working experience in a relevant field.	<b>Full time, Distance, Institution-Based and Electronic Learning (DIBeL)</b> <b>4 semesters</b> KSh. 90,000 per semester
<b>Master of Arts in History</b>	Bachelor Degree with at least Second Class Honours (Upper Division) in a related field. <b>Or</b> Second Class Honours Lower Division with two years of working experience in a relevant field.	<b>Full time, DIBeL</b> <b>4 semesters</b> KSh. 90,000 per semester

<i>Programme of Study</i>	<i>Admission Requirements</i>	<i>Duration &amp; Fees</i>
<b>Master of Arts in Geography</b>	Bachelor Degree with at least Second Class Honours (Upper Division) in a related field. <b>Or</b> Second Class Honours Lower Division with two years of working experience in a relevant field.	<b>Full time, DIBEL</b> <b>4 semesters</b> KSh. 90,000 per semester
<b>Master of Arts in International Relations and Diplomacy</b>	Bachelor Degree with at least Second Class Honours (Upper Division) in the related field. <b>Or</b> Second Class Honours Lower Division with two years of working experience in the related field.	<b>Full time, Digital Learning</b> <b>4 semesters</b> KSh. 90,000 per semester
<b>Master of Arts in Philosophy</b>	Bachelor Degree with at least Second Class Honours (Upper Division) in the related field <b>Or</b> Second Class Honours Lower Division with two years of working experience in the related field	<b>Full time, Digital Learning</b> <b>4 semesters</b> KSh. 90,000 per semester
<b>Master of Arts in English Language and Linguistics</b>	Bachelor of Arts with minimum of Second Class Honours Upper division <b>Or</b> Second class Honours Lower Division with two years of relevant working experience	<b>Full time, DIBEL</b> <b>4 semesters</b> KSh. 90,000 per semester
<b>Master of Arts in English Literature</b>	Bachelor Degree with at least Second Class Honours Upper Division <b>Or</b> Second Class Lower Division with two years relevant working experience	<b>Full time, DIBEL</b> <b>4 semesters</b> KSh. 90,000 per semester
<b>Master of Arts in Kiswahili</b>	Bachelor Degree with at least Second Class Honours Upper Division in BA or Bed. Arts with one of the subjects being Kiswahili <b>Or</b> Second Class Honours Lower Division with two years of relevant working or research experience	<b>Full time, DIBEL</b> <b>4 semesters</b> KSh. 90,000 per semester
<b>Department of Social and Development Studies</b>		
<b>PhD in Development Studies</b> (Thesis Only)	Master of Arts / Master of Science Degree in Development Studies or a related field from a recognized University.	<b>3 years</b> KSh. 200,000 per Annum
<b>PhD in Sociology</b> (Thesis Only)	Master of Arts/Master of Science. Degree in Sociology <b>Or</b> an equivalent qualification from a recognized University.	<b>3 years</b> KSh. 200,000 per Annum

<i>Programme of Study</i>	<i>Admission Requirements</i>	<i>Duration &amp; Fees</i>
<b>Master of Arts in Development Studies</b>	Bachelor Degree in Development Studies, Education, Humanities, Arts & Social Sciences with at least a Second Class Honours (Upper Division) <b>Or</b> Bachelor Degree in Development Studies or any other degree recognized by the Mount Kenya University Senate with Second Class Honours (Lower Division) with a minimum of two years of relevant work experience.	<b>Full time, Digital Learning</b> <b>4 semesters</b> KSh. 90,000 per semester
<b>Master of Arts in Monitoring and Evaluation</b>	Bachelor of Arts or Sciences at undergraduate level with a minimum of Second Class Honours Upper Division Or Second Class Honours Lower Division with two years of relevant working experience	<b>Full time, Digital Learning</b> <b>4 semesters</b> KSh. 90,000 per semester
<b>Post Graduate Diploma in Monitoring and Evaluation</b>	Bachelor's degree in any field from a recognized University	<b>3 semesters</b> KSh. 45,550 per semester <b>Digital Learning</b> KSh. 50,000 per semester

## DEPARTMENT OF JOURNALISM AND MASS COMMUNICATION

<b>Master of Arts (MA) in Journalism and Media Studies</b>	Bachelor of Arts in a related field with a minimum of Second Class Honours (Upper Division) from a recognized University <b>OR</b> Second Class Honours (Lower Division) with two years of relevant working experience.	<b>Full time, Digital Learning</b> <b>4 semesters</b> KSh. 90,000 per semester
<b>Master of Arts (MA) in Film Studies</b>	Bachelor of Arts in related field with Second Class Honours (Upper Division) from a recognized University <b>OR</b> Second Class Honours (Lower Division) with two years of relevant working experience.	<b>4 semesters</b> KSh. 90,000 per semester

## DEPARTMENT OF SECURITY STUDIES, JUSTICE AND ETHICS

<b>PhD in Law Enforcement and Justice Administration (Thesis)</b>	Master of Arts in Law Enforcement and Public Administration or a related field from a recognized University	<b>3 years</b> KSh. 200,000 per annum
<b>Master of Arts in Law Enforcement and Public Administration</b>	Bachelor degree with at least Second Class Honours (Upper Division) from a recognized University <b>OR</b> Second Class Honours (Lower Division) with two years of relevant working experience.	<b>Full time, Digital Learning</b> <b>4 semesters</b> KSh. 90,000 per semester
<b>Master of Arts in Governance and Ethics</b>	Bachelor of Education (Arts) or Bachelor of Arts at with a minimum of Second Class Honours (Upper Division) qualification <b>OR</b> Second Class Honours (Lower Division) with two years of relevant working experience.	<b>Full time, Digital Learning</b> <b>4 semesters</b> KSh. 90,000 per semester

Programme of Study	Admission Requirements	Duration & Fees
<b>Master of Arts in Security Studies and Criminology</b>	Bachelor degree with at least Second Class Honours (Upper Division) from a recognized University OR Second Class Honours (Lower Division) with two years of relevant working experience.	<b>4 semesters</b> <b>Digital learning</b> KSh. 90,000 per semester

## SCHOOL OF HOSPITALITY, TRAVEL AND TOURISM MANAGEMENT

- [hospitalitytourism@mku.ac.ke](mailto:hospitalitytourism@mku.ac.ke)

### Department of Hospitality Management

<b>Master of Science in Hospitality Management (Digital only)</b>	Bachelor degree from a recognized university with a minimum of Second Class Honours (Upper Division). Or Second Class Honours (Lower Division) with a minimum 2 years of relevant work experience.	<b>4 semester</b> <b>Digital learning</b> KSh. 90,000 per semester
---	---	--



*Kigali Paramount Hotel (Rwanda) offers cutting-edge training and student exchange programmes for future hospitality leaders.*

# Application Procedure

## Tuition Fee

All international students (Non East African) to pay additional (statutory fee, quality assurance & tuition fee) of 20% above the fee indicated in this prospectus

The international students can pay fees in the dollar account:

KENYA COMMERCIAL BANK USD ACCOUNT - 1173740309  
(Swift Code. KCBLKENX), Thika Branch

*Please note: Application for admission does not guarantee admission into the University for Course applied for. This will be subject to fulfilment of all requirements and class size as approved by the University Senate.*

## Mode of Payment

1. Statutory fees of KSh. 12,000 payable in the 1st semester/trimester of every Calendar year.
2. Commission for University Education (CUE) levy of KSh. 1,000 payable once on admission.
3. Fees payment can also be done in easy instalments within the semester.
4. Instalments are as follows: 40% upon registration, 20% second instalment, 20% third instalment and 20% fourth instalment.
5. Fees are payable either per semester, trimester or annually in the bank accounts listed below. One academic year is equivalent to Two Semesters. Students can complete a 5-academic-year course in three calendar Years when undertaking three semesters in one calendar year e.g. January-April, May-August, September-December at the student's discretion.
6. Kindly note that the university fee is subject to review from time to time as the University deems fit. Changes in fees are only applicable to new students and does not affect continuing students.
7. The university fees indicated in this prospectus do not include industrial attachments/internship fees. For more information liaise with your respective departments.
8. Government-sponsored (KUCCPS) students applicable fees are indicated in the student admission letters.

## Financial Aid

Mount Kenya University Students benefit from education funding from

- Mount Kenya University Foundation
- MKU Chancellor's Scholarship
- Higher Education Loans Board (HELB [www.helb.co.ke](http://www.helb.co.ke))
- National Government Constituency Development Fund (NG CDF)
- Government Bursaries
- Government Affirmative Action Fund
- National Council for persons with disabilities
- Education Trust Funds eg Saale Gobanai ETF, Saku Forum, Turuyu ETF
- Non- Governmental Organizations e.g. Chalbi Scholars, Direct Aid Kenya
- Multinational Organizations eg, Danish Refugee Council and DAAD

Students can also apply for HELB loans through [www.helb.co.ke](http://www.helb.co.ke)

Bank Name	Account Number	M-PESA Payments	
KCB Bank	1121032222	Lipa na M-Pesa (GTBANK)	Pay Bill No: 270988
Co-operative Bank	01129279981300	Safaricom	Pay Bill No: 4075677 Account Name: • For Application Fee Use: Your ID Number or Passport Number • For Fee Payment use: Your Admission/Registration Number
Equity Bank	0090292435067		
GT Bank	220/136554/1/5101/0		
Standard Chartered Bank	0102049817400		
Family Bank	005000019336		
NIC (NCBA) Bank	1000174347		
National Bank of Kenya	01047093018900		

## How to Apply to Mount Kenya University Online

You can apply to join Mount Kenya University through the online application portal at [admission.mku.ac.ke](http://admission.mku.ac.ke)

Application fee is as follows:

Academic level	East Africans	Other nationalities
Certificate, Diploma, and Undergraduate programs	KSh 1,000	USD 50
Postgraduate programs	KSh 2,000	USD 100

*Note: Transfer fee shall be taken care of by the applicant*

### Application Guide

- Start by creating an account using a valid email address and telephone number.
- Select the course you wish to apply for.
- Confirm that you meet the eligibility requirements for the chosen course.
- Click "Apply Now" to begin your application.
- Follow the step-by-step instructions provided in the portal.
- Upload the required documents, including:
  - KCSE result slip or certificate
  - National ID or Passport
- Review and confirm all the details you have entered in your application.
- Accept the declaration
- Pay the application fee using the provided Paybill number and account number.
- Click "Submit" to send your application.
- After the Admissions Committee reviews your application, you will receive an email containing your admission letter if your application is successful.

Scan to Apply Online or

Visit - <https://admission.mku.ac.ke>



# Equip

## Africa Institute

Promoting Competence, Innovation and Excellence

### INTAKE: JANUARY, MAY & SEPTEMBER

Equip Africa Institute is a TVET-accredited institution of Mount Kenya University offering quality competence-based training at Diploma, Certificate, and Artisan levels in various disciplines. We endeavour to produce graduates furnished with industry-required competencies, values, and attitudes for effective service delivery in a fast-changing world.

DEPARTMENT OF ENGINEERING		
Diploma in Electrical Installation	KCSE C-(minus) or an Equivalent Certificate recognized by KNQA	5 Terms - KShs 20,000 per term
Certificate in Electrical Installation	KCSE D(Plain) or an Equivalent Certificate recognized by KNQA	3 Terms - KShs 20,000 per term
Artisan in Electrical Installation	KCSE Certificate (any grade) or an Equivalent Artisan qualification recognized by KNQA	2 Terms - KShs 20,000 per term
Artisan in Plumbing	KCSE Certificate (any grade) or an Equivalent Artisan qualification recognized by KNQA	3 Terms - KShs 30,000 per term
Plumbing Level 3	KCSE Certificate (any grade) or an Equivalent Artisan qualification recognized by KNQA	1 Term - KShs 25,000 per term
DEPARTMENT OF BEAUTY AND FASHION DESIGN		
Diploma in Hairdressing	KCSE Certificate C- (Minus) or an Equivalent Artisan qualification recognized by KNQA	5 Terms -KShs 20,000 per term
Certificate in Hairdressing	KCSE Certificate D (Plain) or an Equivalent Artisan qualification recognized by KNQA	3 Terms - KShs 20,000 per term
Artisan in Hairdressing	KCSE Certificate D- (Minus) or an Equivalent Artisan qualification recognized by KNQA	2 Terms -KShs 20,000 per term
Artisan in Fashion Design	KCSE Certificate (any grade) or an Equivalent Artisan qualification recognized by KNQA	2 Terms - KShs 20,000 per term
Artisan in Beauty Therapy	KCSE Certificate D- (Minus) or an Equivalent Artisan qualification recognized by KNQA	3 Terms -KShs 35,000 per term
DEPARTMENT OF HOSPITALITY		
Diploma in Food Production	KCSE C-(minus) or an Equivalent Certificate recognized by KNQA	5 Terms - KShs 25,000 per term
Certificate in Food Production	KCSE D(Plain) or an Equivalent Certificate recognized by KNQA	3 Terms - KShs 20,000 per term
Artisan in Food Production	KCSE Certificate (any grade) or an Equivalent Artisan qualification recognized by KNQA	2 Terms - KShs 25,000 per term
DEPARTMENT OF HEALTH SCIENCES		
Diploma in Community Health	KCSE C- or its equivalent or a certificate from a recognized institution	6 Terms - KShs 20,000 per term
Certificate in Community Health	KCSE D(Plain) or an Equivalent Certificate recognized by KNQA	4 Terms - KShs 18,000 per term
Artisan in Community Health	KCSE Certificate (any grade) or an Equivalent Artisan qualification recognized by KNQA	2 Terms - KShs 18,000 per term
Diploma in Perioperative Theatre Technology	KCSE C-(minus) or an Equivalent Certificate recognized by KNQA	6 Terms - KShs 30,000 per term
Certificate in Perioperative Theatre Technology	KCSE D(Plain) or an Equivalent Certificate recognized by KNQA	4 Terms - KShs 25,000 per term
Diploma in Kenya Registered Community Health Nursing	KCSE Mean grade C (plain), and C (plain) in English/ Kiswahili, C (plain) in Biology, C-(minus) in Chemistry/ Mathematics/Physics	9 Terms - KShs 45,000 per term
Diploma in Health Records and IT	KCSE Mean grade C (plain), English/Kiswahili C (plain), Biology/ Biological Sciences D+, Mathematics C-, C- in Chem/Phy/Agri/ Business Studies/Home Science	6 Terms - KShs 25,000 per term
Certificate in Health Records and IT	KCSE Mean grade C-, English/Kiswahili C-, Bio/Bio Sciences D, Mathematics D+, D+ in Chemistry/ Physics/Agriculture/Business Studies/Home Science	4 Terms - KShs 18,000 per term
Diploma in Health Service Support Provider	KCSE C-(Minus) or an Equivalent Certificate recognized by KNQA	6 Terms - KShs 20,000 per term
Certificate in Health Service Support Provider	KCSE D(Plain) or an Equivalent Certificate recognized by KNQA	3 Terms - KShs 18,000 per term

Artisan in Health Service Support Provider	KCSE D-(Minus) or an Equivalent Certificate recognized by KNQA	2 Terms - KShs 18,000 per term
Diploma in Science Laboratory Technology	KCSE C- or its equivalent or a certificate from a recognized institution	6 Terms - KShs 18,000 per term
Certificate in Science Laboratory Technology	KCSE mean grade D (Plain) or an Equivalent Artisan qualification recognized by KNQA	4 Terms - KShs 18,000 per term
Diploma in Nutrition and Dietetics	KCSE Mean grade of C- (minus) and D+ (plus) in English/Kiswahili, Biology, Chemistry and D+ (plus) in Mathematics/Physics/ Agriculture/Home Science/ Computer Science	9 Terms - KShs 22,000 per term
Certificate in Nutrition and Dietetics	KCSE mean grade D (Plain), D plain in English/ Kiswahili, Biology, Chemistry, D (plain) in Mathematics/ Physics/Agriculture/Home Science/Computer Science	6 Terms - KShs 20,000 per term
Diploma in Clinical Medicine	KCSE Mean grade C (Plain) and C (Plain) in English/ Kiswahili, C (Plain) in Biology, C- (Minus) in Chemistry, Mathematics/Physics	9 Terms - KShs 60,000 per term
Diploma in Medical Laboratory Sciences	KCSE Mean Grade C (plain), and C (plain) in English/ Kiswahili, C (plain) in Biology, C (plain) Chemistry/ Mathematics and Physics	9 Terms - KShs 30,000 per term
<b>DEPARTMENT OF ICT AND MEDIA</b>		
Diploma in ICT Technician	KCSE C-(minus) or an Equivalent Certificate recognized by KNQA	6 Terms - KShs 20,000 per term
Certificate in ICT Technician	KCSE D(Plain) or an Equivalent Certificate recognized by KNQA	4 Terms - KShs 20,000 per term
Artisan in ICT Technician	KCSE Certificate (any grade) or an Equivalent Artisan qualification recognized by KNQA	2 Terms - KShs 20,000 per term
Diploma in Cyber Security	KCSE C-(minus) or an Equivalent Certificate recognized by KNQA	5 Terms - KShs 20,000 per term
Certificate in Cyber Security	KCSE D(Plain) or an Equivalent Certificate recognized by KNQA	3 Terms - KShs 20,000 per term
Diploma in Computer Science	KCSE C-(minus) or an Equivalent Certificate recognized by KNQA	6 Terms - KShs 20,000 per term
Diploma in Broadcast Journalism	KCSE C-(minus) or an Equivalent Certificate recognized by KNQA	6 Terms - KShs 20,000 per term
<b>DEPARTMENT OF BUSINESS STUDIES AND SOCIAL SCIENCES</b>		
Diploma in Business Management	KCSE C-(minus) or an Equivalent Certificate recognized by KNQA	6 Terms - KShs 20,000 per term
Certificate in Business Management	KCSE D(Plain) or an Equivalent Certificate recognized by KNQA	3 Terms - KShs 18,000 per term
Artisan in Office Assistant	KCSE Certificate (any grade) or an Equivalent Artisan qualification recognized by KNQA	2 Terms - KShs 20,000 per term
Diploma in Human Resource Management	KCSE C-(minus) or an Equivalent Certificate recognized by KNQA	6 Terms - KShs 20,000 per term
Certificate in Human Resource Management	KCSE D(Plain) or an Equivalent Certificate recognized by KNQA	3 Terms - 18,000 per term
Diploma in Banking and Finance	KCSE C-(minus) or an Equivalent Certificate recognized by KNQA	6 Terms - 20,000 per term
Diploma in Social Work	KCSE C-(minus) or an Equivalent Certificate recognized by KNQA	6 Terms - 20,000 per term
Certificate in Social Work	KCSE D(Plain) or an Equivalent Certificate recognized by KNQA	4 Terms - 20,000 per term
Artisan in Social Work	KCSE Certificate (any grade) or an Equivalent Artisan qualification recognized by KNQA	2 Terms - 20,000 per term
Diploma in Tourism and Travel Management	KCSE C-(minus) or an Equivalent Certificate recognized by KNQA	6 Terms - KShs 20,000 per term
Certificate in Tourism and Travel Management	KCSE D(Plain) or an Equivalent Certificate recognized by KNQA	3 Terms - KShs 20,000 per term
Diploma in Criminal Justice Management	KCSE C-(minus) or an Equivalent Certificate recognized by KNQA	6 Terms - KShs 18,000 per term
Certificate in Maritime Transport and Logistics Management	KCSE D(Plain) or an Equivalent Certificate recognized by KNQA	6 Terms - KShs 40,000 per term

Attachment Fees Kshs. 10,000, Statutory Fees Kshs. 12,000 Per Year, Exams Fees (Vary from program to program and paid to TVET CDACC)

**Bank Information Equip Africa Institute**

COOP BANK - THIKA BRANCH A/C NO:  
01129558232700  
OR COOP BANK - THIKA A/C NO: 01143558232700  
OR PAYBILL 4121851  
A/C No: Student Name/ Student National ID/ Student  
Ref Number/ Student Registration Number  
Email: admissions@eai.ac.ke | Website: www.eai.ac.ke  
Online Application: https://eai.ac.ke/apply/

**For more information, please contact:**

<b>NAIROBI CAMPUS</b> +254 785 667 771/+254 733 599 553	<b>NAKURU CAMPUS</b> +254 114 274 286
<b>THIKA CAMPUS</b> +254 709 153 205 /+254 101 663 773	<b>MALINDI CAMPUS</b> +254 745 054 563
<b>KITALA CAMPUS</b> +254 700 551 418 /+254 753 551 418	<b>KISII CAMPUS</b> +254 784 884 000
<b>MOMBASA CAMPUS</b> +254 796 237 512	+254 20 2500 122

# Centre for Professional Development (CPD)

The Centre for Professional Development (CPD) offers professional courses, foreign languages, and short courses, equipping students and professionals with industry-relevant skills to enhance their career prospects. Accredited by local and international certification bodies, the CPD ensures high-quality training that meets global standards, reinforcing Mount Kenya University's commitment to excellence in education and workforce development.

## PROFESSIONAL COURSES

### Certified Human Resource Professional (CHRP)

Tuition fee: Ksh 25,000 per semester  
Intake: Jan, May, Sept Study mode: Online  
Requirements: KCSE C+, or Degree or Diploma as may be approved by the Board.

### Chartered Institute for Securities and Investment (CISI)

Tuition fee: Ksh 10,000 per module  
Intake: Monthly Study mode: Online  
Requirements: Open

### Certified Investment and Financial Analysts (CIFA)

Tuition fee: Ksh 25,000 per semester  
Intake: Jan, May, Sept Study mode: Online  
Requirements: KCSE C+, or Degree or Diploma as may be approved by the Board.

### Certified Procurement and Supply Professional of Kenya (CPSP-I)

Tuition fee: Ksh 25,000 per semester  
Intake: Jan, May, Sept Study mode: Online  
Requirements: KCSE C+, or Degree or Diploma as may be approved by the Board.

### Certified Public Accountants (CPA-K)

Tuition fee: Ksh 25,000 per semester  
Intake: Jan, May, Sept Study mode: Physical  
Requirements: KCSE C+, or Degree or Diploma as may be approved by the Board.

### Certified Associate in Project Management (CAPM)

Tuition fee: 41,500 per month Intake: Monthly  
Study mode: Online Requirements: Open

### Cisco - Networking, Cloud and Cyber Security Solutions

Tuition fee: Ksh 10,000 per module Intake: Monthly  
Study mode: Physical Requirements: Open

### Certified Forensic Fraud Examiner (CFFE)

Tuition fee: Ksh 25,000 per semester  
Intake: Jan, May, Sept Study mode: Online  
Requirements: KCSE C+, or Degree or Diploma as may be approved by the Board.

### Certified Secretaries (CS-K)

Tuition fee: Ksh 25,000 per semester  
Intake: Jan, May, Sept Study mode: Online  
Requirements: KCSE C+, or Degree or Diploma as may be approved by the Board.

## SHORT COURSES

### CYBER SECURITY

Tuition fee: Ksh 20,000 Intake: Jan, May, Sept  
Study mode: Online, Physical Duration: 1 month  
Requirements: Open

### WEB DESIGN

Tuition fee: Ksh 15,000 Intake: Jan, May, Sept  
Study mode: Online, Physical Duration: 1 month  
Requirements: Open

## ICDL PACKAGES

Tuition fee: Ksh 15,000 Intake: Jan, May, Sept  
Study mode: Online, Physical Duration: 1 month  
Requirements: Open

## FINANCIAL SPREDSHEETS

Tuition fee: Ksh 7,000 Intake: Jan, May, Sept  
Study mode: Online, Physical Duration: 1 month  
Requirements: Open

## DIGITAL MARKETING

Tuition fee: Ksh 7,000 Intake: Jan, May, Sept  
Study mode: Online, Physical Duration: 1 month  
Requirements: Open

## ICT IN EDUCATION

Tuition fee: Ksh 7,000 Intake: Jan, May, Sept  
Study mode: Online, Physical Duration: 1 month  
Requirements: Open

## DYSLEXIA COURSE

Tuition fee: Ksh 15,000 Intake: Apr, Aug, Dec  
Study mode: Blended Duration: 3 months  
Requirements: Open

## FUNDAMENTALS OF CBE UNIT(CBC)

Tuition Fee: Ksh 10,000 Intake: Apr, Aug, Dec  
Study mode: Blended Duration: 3 months  
Requirements: Open

## LANGUAGE COURSES

### ENGLISH COURSE

Tuition fee: Ksh 15,000 per module Intake: Jan, May, Sept  
Study mode: Online, Physical Duration: 1 month  
Requirements: Open

### GERMAN LANGUAGE

Tuition fee: Ksh 22,000 Intake: Monthly  
Study mode: Online, Physical Duration: 2 months per level  
Requirements: Open

### FRENCH LANGUAGE

Tuition fee: Ksh 15,000 Intake: Monthly  
Study mode: Online Duration: 2 months per level  
Requirements: Open

### ITALIAN LANGUAGE

Tuition fee: Ksh 15,000 Intake: Monthly  
Study mode: Online Duration: 2 months per level  
Requirements: Open

### SWAHILI LANGUAGE

Tuition fee: Ksh 10,000 Intake: Monthly  
Study mode: Online, Physical Duration: 2 months per level  
Requirements: Open

Download MKU application form from the website [www.mku.ac.ke](http://www.mku.ac.ke)  
Application fees of Ksh. 1,000 is payable through: **Paybill No. 4075677 Account No. Student National ID Or Birth Certificate Number Or Passport Number**



Mount Kenya University, Main campus, Thika.



#Baze47NaManucho X DJ Immo

# BAZE 47

MONDAY - FRIDAY | 1PM - 3PM

• LIVE ON tv47

LISTEN

[www.radio47.fm](http://www.radio47.fm)

WATCH

tv47



**BEAT**  
**PLUG Xtra**

#BeatPlugXtra  
with Bancey Kimuyu X Mr Vancie  
**Saturdays: 11am - 1pm**

 TV47 Kenya    @tv47kenya    @tv47digital    @TV47Kenya    tv47.digital

WATCH US ON:

  
Channel 343

  
Channel 20

  
Channel 69

  
Channel 274







## Campus, ODeL Centres and Institutes

### THIKA MAIN CAMPUS

General Kagoo Road  
P.O. Box 342-01000 Thika  
Tel: +254 20 2878 000  
Cell: +254 709 153 000  
www.mku.ac.ke  
E: info@mku.ac.ke

### NAIROBI CAMPUS

MKU Towers & Union Towers  
Moi Avenue  
P.O. Box 13495-00100, GPO Nairobi  
Tel: 0709 153 400, 0709 153 401  
Email: nairobicenter@mku.ac.ke

### PARKLANDS LAW SCHOOL

Tel: 0740 669 697 / 0740 669 833  
Email: law@mku.ac.ke  
directorparklands@mku.ac.ke

### MOMBASA CAMPUS

MKU Plaza, Nkurumah Road  
P.O. Box 42702-80100, Mombasa  
Tel: 020 8002 096 / 0114 925 021  
Email: coastcampus@mku.ac.ke

### NAKURU CAMPUS

Great Rift Plaza  
Opp. Valley Hospital, Kipchoge Keino Rd  
P.O. Box 17273-20100 Nakuru  
Tel: 020 2338144  
Cell: 0705 669 811 / 0789 729 561  
0724 179 089  
Email: nkrccampus@mku.ac.ke

### ELDORET CAMPUS

P.O. Box 2591-30100, Eldoret  
Tel: 0724 205 425, 0724 205 438/2  
Email: eldoretcenter@mku.ac.ke

### MERU CAMPUS

Opposite Meru County Assembly  
P.O. Box 1468-60200 Meru  
Tel: 064 2629462  
0724 178 832 / 0709 153 502  
Email: merucampus@mku.ac.ke

### OPEN, DISTANCE AND ELECTRONIC LEARNING (ODEL)

P.O. Box 342-01000 Thika  
Tel: 0724 205 417 Cell: 0720 041 042  
www.odel.mku.ac.ke

### ODEL CENTERS

#### MALINDI ODEL CENTRE

Off Malindi-Mombasa Road  
Tel: 0799 201 209 / 0734 766 143  
Email: malindi@mku.ac.ke

#### KISUMU ODEL CENTRE

Mega Plaza, Wing B, 2nd Floor  
P.O. Box 392-40100, Kisumu  
Tel: 057 2029967 / 0737 580 998  
0724 204 193  
Email: kisumu@mku.ac.ke

#### KISII ODEL CENTRE

P.O. Box 4441, Kisii  
Tel: 0724 205 452  
Email: kisiicampus@mku.ac.ke

#### KAKAMEGA ODEL CENTRE

P.O. Box 533-50100, Kakamega  
Tel: 0724 178 506  
Email: kakamegacampus@mku.ac.ke

#### KITALE ODEL CENTRE

Kitale ODEL Centre  
P.O. Box 1869-30200, Kitale  
Cell: 0724 204 338 / 0724 204 342  
Email: kitalecampus@mku.ac.ke

#### KERICHO ODEL CENTRE

Sinendet Towers  
P.O. Box 1902-20200, Kericho  
Tel: 0704 229 431  
Email: kericho@mku.ac.ke

#### MACHAKOS ODEL CENTRE

Muvango Building  
Ngei-Lukindo Rd Junction  
Tel: 011 5784166  
Email: machakos@mku.ac.ke

#### EMBU ODEL CENTRE

Ghanshyam Plaza  
Daya S.N. Patel Road  
Tel: 0704 335 547  
Email: embu@mku.ac.ke

### MARKETING OFFICES

#### NYERI CENTRE

MKU Plaza  
Tel: 0723 356 247  
Email: nyericampus@mku.ac.ke

### COUNTRY OFFICES

#### UGANDA - Kampala

Equip Africa Institute - Uganda  
MKU Regional Coordinating Office  
Kibuli Mbogo Road  
P.O. Box 4582, Kampala  
Tel: +256 758 666 190 / +256 772 335 582  
Email: kampala@mku.ac.ke

#### HARGEISA ODEL CENTRE - Somaliland

Jigjiga Yar, Warsame Siciid Building  
Ground Floor  
Landline: 571100, 571101  
Cell: 0634 044 402, 0659 088 869  
Email: Hargeisa@mku.ac.ke

#### BURUNDI - Bujumbura

Avenue de l'Amitie  
ABC Building, Office No. A7 and A8  
Tel: +257 68 00 00 05  
Email: burundi@mku.ac.ke

### INSTITUTES

#### EQUIP AFRICA INSTITUTE

Union Towers 5th Floor  
P.O. Box 13495-00100 GPO  
Tel: 020 2187379  
www.equip-africa.co.ke

#### EQUIP AFRICA INSTITUTE - THIKA

Tel: +254 709 153 205  
Email: equipafricathika@mku.ac.ke  
www.eai.ac.ke | www.mku.ac.ke

#### EQUIP AFRICA INSTITUTE - KITALE

P.O. Box 1869 - 30200 Kitale  
Tel: 0700 551 418 / 0753 551 418  
Email: admissions@eac.ac.ke  
www.eac.ac.ke

#### CENTRE FOR PROFESSIONAL DEVELOPMENT

Tel: 0709 153 194  
Email: cpd@mku.ac.ke

#### MARITIME ACADEMY- MALINDI

Off Malindi- Mombasa Highway  
Tel: 0709 153 530  
Email: maritimeacademy@mku.ac.ke

